

## MAGEC2 polyclonal antibody

Catalog: BS5956

Host: Rabbit

Reactivity: Human, Mouse, Rat

### BackGround:

MAGE-C2/C3 (Melanoma-associated antigen C2, Hepatocellular carcinoma-associated antigen 587) is a 373 amino acid protein encoded by the human gene MAGEC2. Genes of the MAGE family direct the expression of tumor antigens that are recognized on human melanomas by autologous cytolytic T lymphocytes. Among tumor tissues, MAGE-C2/C3 is frequently expressed in seminomas, melanomas, and bladder transitional cell carcinomas. It is also expressed in a significant fraction of head and neck carcinomas, breast carcinomas, nonsmall-cell lung carcinomas, and sarcomas. In hepatocellular carcinoma, there is an inverse correlation between tumor differentiation and protein expression, i.e. the lower the differentiation, the higher the percentage of expression. MAGE-C2/C3 is not expressed in normal tissues, except in germ cells in the seminiferous tubules and in Purkinje cells of the cerebellum. It is strongly expressed in spermatogonia and primary spermatocytes, however, at later stages of maturation, expression gradually decreases to become undetectable in mature spermatids.

### Product:

1 mg/ml in Phosphate buffered saline (PBS) with 0.05% sodium azide, approx. pH 7.2.

### Molecular Weight:

~ 41 kDa

### Swiss-Prot:

Q9UBF1

### Purification&Purity:

The antibody was affinity-purified from rabbit antiserum

by affinity-chromatography using epitope-specific immunogen and the purity is > 95% (by SDS-PAGE).

### Applications:

WB: 1:500~1:1000

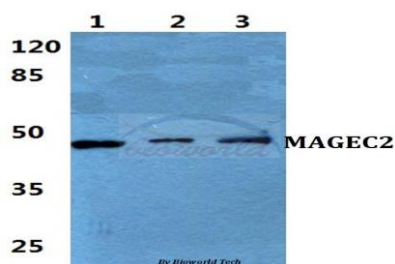
### Storage&Stability:

Store at 4 °C short term. Aliquot and store at -20 °C long term. Avoid freeze-thaw cycles.

### Specificity:

MAGEC2 polyclonal antibody detects endogenous levels of MAGEC2 protein.

### DATA:



Western blot (WB) analysis of MAGEC2 polyclonal antibody at 1:500 dilution

Lane1: HEK293T cell lysate

Lane2: NIH-3T3 cell lysate

Lane3: PC12 cell lysate

### Note:

For research use only, not for use in diagnostic procedure.

### Bioworld Technology, Inc.

Add: 1660 South Highway 100, Suite 500 St. Louis Park, MN 55416, USA.

Email: [info@bioworld.com](mailto:info@bioworld.com)

Tel: 6123263284

Fax: 6122933841

### Bioworld technology, co. Ltd.

Add: No 9, weidi road Qixia District Nanjing, 210046, P. R. China.

Email: [info@biogot.com](mailto:info@biogot.com)

Tel: 0086-025-68037686

Fax: 0086-025-68035151