

STMN2 polyclonal antibody

Catalog: BS5948

Host: Rabbit

Reactivity: Human, Mouse, Rat

BackGround:

SCG10, also designated stathmin-like 2 (STMN2), is a neuronal growth-associated protein (nGAP) that belongs to the stathmin family. Stathmin family phosphoproteins are involved in regulation of microtubule dynamics and signal transduction. SCG10, which is membrane-associated and neuron-specific, may participate in neuronal differentiation and may modulate membrane interaction with the cytoskeleton during neurite outgrowth. The SCG10 protein binds to and inhibits the assembly of microtubules, and can also induce microtubule disassembly. The assembly and disassembly of microtubules is necessary for cell division, intracellular transport and cell movements, as well as neurite elongation, outgrowth and branching in the developing nervous system.

Product:

1mg/ml in PBS with 0.1% Sodium Azide, 50% Glycerol.

Molecular Weight:

~ 23 kDa

Swiss-Prot:

Q93045

Purification&Purity:

The antibody was affinity-purified from rabbit antiserum by affinity-chromatography using epitope-specific immunogen and the purity is > 95% (by SDS-PAGE).

Applications:

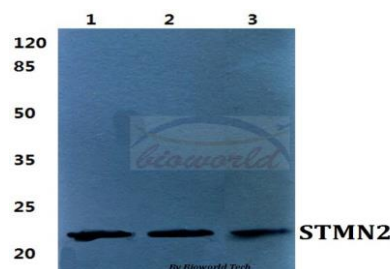
WB: 1:500~1:1000

Storage&Stability:

Store at 4 °C short term. Aliquot and store at -20 °C long term. Avoid freeze-thaw cycles.

Specificity:

STMN2 polyclonal antibody detects endogenous levels of STMN2 protein.

DATA:

Western blot (WB) analysis of STMN2 polyclonal antibody at 1:500 dilution

Lane1:MCF-7 cell lysate

Lane2:NIH-3T3 cell lysate

Lane3:H9C2 cell lysate

Note:

For research use only, not for use in diagnostic procedure.

Bioworld Technology, Inc.

Add: 1660 South Highway 100, Suite 500 St. Louis Park, MN 55416, USA.

Email: info@bioworld.com

Tel: 6123263284

Fax: 6122933841

Bioworld technology, co. Ltd.

Add: No 9, weidi road Qixia District Nanjing, 210046, P. R. China.

Email: info@biogol.com

Tel: 0086-025-68037686

Fax: 0086-025-68035151