

SLU7 polyclonal antibody

Catalog: BS5936

Host: Rabbit

Reactivity: Human, Mouse, Rat

BackGround:

In order to produce correctly spliced messenger RNA, two catalytic splicing steps are required. After catalytic step I, a major remodeling of the spliceosome occurs to establish the active site for step II. During the second step of mRNA splicing, exon 1 attacks an adenine-guanine (AG) dinucleotide at the 3' splice site. SLU7, the human homolog of the yeast step II splice factor Slu7, is required for selection of the correct AG. Human SLU7 associates with the spliceosome late in the splicing pathway prior to recognition of the 3' splice site for step II. SLU7 depletion in HeLa nuclear extract reveals that SLU7 is required to hold exon 1 tightly within the spliceosome for attack on a prespecified AG.

Product:

1 mg/ml in Phosphate buffered saline (PBS) with 0.05% sodium azide, approx. pH 7.2.

Molecular Weight:

~ 68 kDa

Swiss-Prot:

O95391

Purification&Purity:

The antibody was affinity-purified from rabbit antiserum by affinity-chromatography using epitope-specific immunogen and the purity is > 95% (by SDS-PAGE).

Applications:

WB: 1:500~1:1000

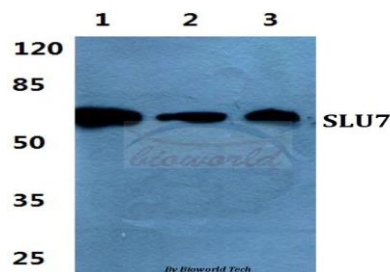
Storage&Stability:

Store at 4 °C short term. Aliquot and store at -20 °C long term. Avoid freeze-thaw cycles.

Specificity:

SLU7 polyclonal antibody detects endogenous levels of SLU7 protein.

DATA:



Western blot (WB) analysis of SLU7 polyclonal antibody at 1:500 dilution

Lane1:A549 cell lysate

Lane2:sp2/0 cell lysate

Lane3:PC12 cell lysate

Note:

For research use only, not for use in diagnostic procedure.

Bioworld Technology, Inc.

Add: 1660 South Highway 100, Suite 500 St. Louis Park, MN 55416, USA.

Email: info@bioworld.com

Tel: 6123263284

Fax: 6122933841

Bioworld technology, co. Ltd.

Add: No 9, weidi road Qixia District Nanjing, 210046, P. R. China.

Email: info@biogot.com

Tel: 0086-025-68037686

Fax: 0086-025-68035151