

SLC6A8 polyclonal antibody

Catalog: BS5934

Host: Rabbit

Reactivity: Human, Mouse, Rat

BackGround:

SLC6A8 (solute carrier family 6 member 8), also known as CT1 (creatine transporter 1), CRT or CRTR, is a 635 amino acid multi-pass plasma membrane protein that belongs to the sodium/neurotransporter (SNF) family. Expressed in a variety of tissues including kidney, skeletal muscle, heart, brain, prostate, testis and colon, SLC6A8 functions to transport creatine into and out of cells, specifically those found in brain and muscle tissue. Creatine, an organic acid, occurs naturally and is essential for supplying the energy needed for proper muscle and nerve function. Defects in the gene encoding SLC6A8 lead to cerebral creatine deficiency and are the cause of X-linked creatine deficiency syndrome, a rare disorder characterized by facial anomalies, seizures and mental retardation. Multiple isoforms of SLC6A8 exist due to alternative splicing events.

Product:

1 mg/ml in Phosphate buffered saline (PBS) with 0.05% sodium azide, approx. pH 7.2.

Molecular Weight:

~ 70 kDa

Swiss-Prot:

P48029

Purification&Purity:

The antibody was affinity-purified from rabbit antiserum by affinity-chromatography using epitope-specific immunogen and the purity is > 95% (by SDS-PAGE).

Applications:

WB: 1:500~1:1000

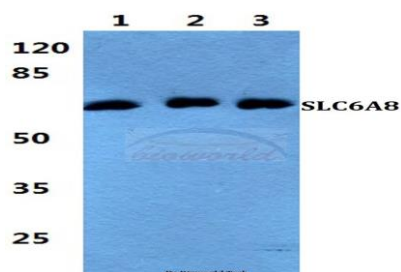
Storage&Stability:

Store at 4 °C short term. Aliquot and store at -20 °C long term. Avoid freeze-thaw cycles.

Specificity:

SLC6A8 polyclonal antibody detects endogenous levels of SLC6A8 protein.

DATA:



Western blot (WB) analysis of SLC6A8 polyclonal antibody at 1:500 dilution

Lane1: HEK293T cell lysate

Lane2: Raw264.7 cell lysate

Lane3: H9C2 cell lysate

Note:

For research use only, not for use in diagnostic procedure.

Bioworld Technology, Inc.

Add: 1660 South Highway 100, Suite 500 St. Louis Park, MN 55416, USA.

Email: info@bioworld.com

Tel: 6123263284

Fax: 6122933841

Bioworld technology, co. Ltd.

Add: No 9, weidi road Qixia District Nanjing, 210046, P. R. China.

Email: info@biogot.com

Tel: 0086-025-68037686

Fax: 0086-025-68035151