

## RIN1 polyclonal antibody

Catalog: BS5911

Host: Rabbit

Reactivity: Human, Mouse, Rat

### BackGround:

Ras is a membrane-associated small G protein that is indirectly coupled to receptor and nonreceptor tyrosine kinases. Ras activation is regulated by the levels of bound GTP and GDP. Several effectors of Ras have been identified, including Raf1, PI 3-kinase and RIN1. RIN1 (Ras interaction/interference) was identified as a Ras-interacting protein in yeast, and it has been shown to bind to the human H-Ras. This RIN1-Ras interaction is enhanced when Ras is bound to GTP. Unlike Raf1, RIN1 is localized primarily to the plasma membrane. RIN1 contains an SH2 domain and an amino-terminal region similar to consensus SH3 domains. RIN1 binds c-Abl and, like Raf1, interacts with 14-3-3 proteins.

### Product:

1 mg/ml in Phosphate buffered saline (PBS) with 0.05% sodium azide, approx. pH 7.2.

### Molecular Weight:

~ 90 kDa

### Swiss-Prot:

Q13671

### Purification&Purity:

The antibody was affinity-purified from rabbit antiserum by affinity-chromatography using epitope-specific immunogen and the purity is > 95% (by SDS-PAGE).

### Applications:

WB: 1:500~1:1000

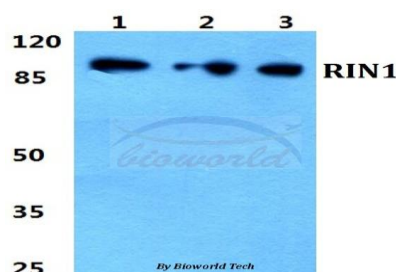
### Storage&Stability:

Store at 4 °C short term. Aliquot and store at -20 °C long term. Avoid freeze-thaw cycles.

### Specificity:

RIN1 polyclonal antibody detects endogenous levels of RIN1 protein.

### DATA:



Western blot (WB) analysis of RIN1 polyclonal antibody at 1:500 dilution

Lane1:Hela cell lysate

Lane2:NIH-3T3 cell lysate

Lane3:H9C2 cell lysate

### Note:

For research use only, not for use in diagnostic procedure.

### Bioworld Technology, Inc.

Add: 1660 South Highway 100, Suite 500 St. Louis Park, MN 55416, USA.

Email: [info@bioworld.com](mailto:info@bioworld.com)

Tel: 6123263284

Fax: 6122933841

### Bioworld technology, co. Ltd.

Add: No 9, weidi road Qixia District Nanjing, 210046, P. R. China.

Email: [info@biogol.com](mailto:info@biogol.com)

Tel: 0086-025-68037686

Fax: 0086-025-68035151