

## RPL11 polyclonal antibody

Catalog: BS5902

Host: Rabbit

Reactivity: Human, Mouse, Rat

### BackGround:

The genes encoding for mammalian ribosomal proteins comprise multigene families that consist predominantly of multiple processed pseudogenes and one functional intro-containing gene within their coding regions. The rpS6 gene gives rise to Ribosomal protein S6 (also designated RPS6) and Ribosomal protein L28. Sequence comparison has identified RPS6 as the equivalent of the ribosomal protein S10 from *Saccharomyces cerevisiae*. The sequence comparison of ribosomal proteins from evolutionarily distant eukaryotes, such as yeast and human, indicates that the structure and the function are highly conserved.

### Product:

1 mg/ml in Phosphate buffered saline (PBS) with 0.05% sodium azide, approx. pH 7.2.

### Molecular Weight:

~ 20 kDa

### Swiss-Prot:

P62913

### Purification&Purity:

The antibody was affinity-purified from rabbit antiserum by affinity-chromatography using epitope-specific immunogen and the purity is > 95% (by SDS-PAGE).

### Applications:

WB: 1:500~1:1000

ICC: 1:50~1:200

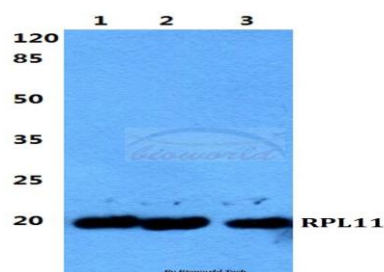
### Storage&Stability:

Store at 4 °C short term. Aliquot and store at -20 °C long term. Avoid freeze-thaw cycles.

### Specificity:

RPL11 polyclonal antibody detects endogenous levels of RPL11 protein.

### DATA:



Western blot (WB) analysis of RPL11 polyclonal antibody at 1:500 dilution

Lane1:MCF-7 cell lysate

Lane2:sp2/0 cell lysate

Lane3:H9C2 cell lysate

### Note:

For research use only, not for use in diagnostic procedure.

### Bioworld Technology, Inc.

Add: 1660 South Highway 100, Suite 500 St. Louis Park, MN 55416, USA.

Email: [info@bioworld.com](mailto:info@bioworld.com)

Tel: 6123263284

Fax: 6122933841

### Bioworld technology, co. Ltd.

Add: No 9, weidi road Qixia District Nanjing, 210046, P. R. China.

Email: [info@biogol.com](mailto:info@biogol.com)

Tel: 0086-025-68037686

Fax: 0086-025-68035151