

## RASSF2 polyclonal antibody

Catalog: BS5884

Host: Rabbit

Reactivity: Human, Mouse, Rat

### BackGround:

Ras is a small GTP-binding protein involved in many cellular processes, including proliferation, differentiation and apoptosis. Ras transmits signals of cell surface receptors by binding to a variety of effector molecules. In addition to the well-characterized effectors Raf and PI-3 kinase, Ras also interacts with a group of homologous, noncatalytic proteins composed of RASSF1, RASSF2, RASSF3, AD037 and Nore1. RASSF1 is a potential tumor suppressor gene that plays an important role in tumor pathogenesis. Nore1 binds to Ras in response to EGF or serum stimulation, but its function has yet to be determined. RASSF2 is a nuclear protein containing a Ras-associating domain and a SARAH domain. RASSF2 isoform A is inactivated in colorectal cancer cells by CpG island promoter hypermethylation.

### Product:

1mg/ml in PBS with 0.1% Sodium Azide, 50% Glycerol.

### Molecular Weight:

~ 38 kDa

### Swiss-Prot:

P50749

### Purification&Purity:

The antibody was affinity-purified from rabbit antiserum by affinity-chromatography using epitope-specific immunogen and the purity is > 95% (by SDS-PAGE).

### Applications:

WB: 1:500~1:1000

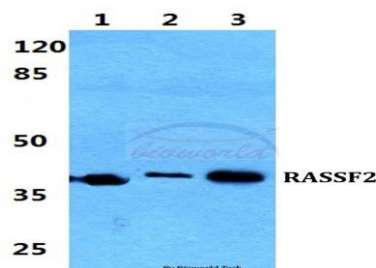
### Storage&Stability:

Store at 4 °C short term. Aliquot and store at -20 °C long term. Avoid freeze-thaw cycles.

### Specificity:

RASSF2 polyclonal antibody detects endogenous levels of RASSF2 protein.

### DATA:



Western blot (WB) analysis of RASSF2 polyclonal antibody at 1:500 dilution

Lane1:Hela cell lysate

Lane2:NIH-3T3 cell lysate

Lane3:H9C2 cell lysate

### Note:

For research use only, not for use in diagnostic procedure.

### Bioworld Technology, Inc.

Add: 1660 South Highway 100, Suite 500 St. Louis Park, MN 55416, USA.

Email: [info@bioworld.com](mailto:info@bioworld.com)

Tel: 6123263284

Fax: 6122933841

### Bioworld technology, co. Ltd.

Add: No 9, weidi road Qixia District Nanjing, 210046, P. R. China.

Email: [info@biogot.com](mailto:info@biogot.com)

Tel: 0086-025-68037686

Fax: 0086-025-68035151