

PSMD3 polyclonal antibody

Catalog: BS5870

Host: Rabbit

Reactivity: Human, Mouse, Rat

BackGround:

In eukaryotic cells, selective breakdown of cellular proteins is ensured by their ubiquitination and subsequent degradation by the 26S Proteasome. The 26S Proteasome is a protease complex that selectively breaks down proteins that have been modified by polyubiquitin chains. It is made up of two multisubunit complexes: the 20S Proteasome chamber, which serves as the proteolytic core of the complex and two 19S regulatory particles which recognize and unfold ubiquitinated proteins. PSMD3 (proteasome (prosome, macropain) 26S subunit, non-ATPase, 3), also known as S3, P58 or RPN3, is a 534 amino acid regulatory component of the 26S Proteasome that consists of one PCI domain. PSMD3 is encoded by a gene located on human chromosome 17, which comprises over 2.5% of the human genome and encodes over 1,200 genes.

Product:

1mg/ml in PBS with 0.1% Sodium Azide, 50% Glycerol.

Molecular Weight:

~ 61 kDa

Swiss-Prot:

O43242

Purification&Purity:

The antibody was affinity-purified from rabbit antiserum by affinity-chromatography using epitope-specific immunogen and the purity is > 95% (by SDS-PAGE).

Applications:

WB: 1:500~1:1000

IHC: 1:50~1:200

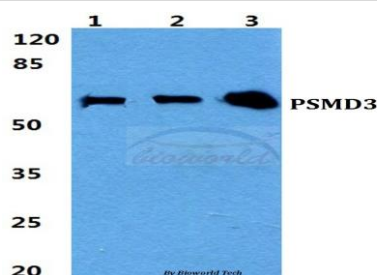
Storage&Stability:

Store at 4 °C short term. Aliquot and store at -20 °C long term. Avoid freeze-thaw cycles.

Specificity:

PSMD3 polyclonal antibody detects endogenous levels of PSMD3 protein.

DATA:



Western blot (WB) analysis of PSMD3 polyclonal antibody at 1:500 dilution

Lane1: HEK293T cell lysate

Lane2: Raw264.7 cell lysate

Lane3: PC12 cell lysate

Note:

For research use only, not for use in diagnostic procedure.

Bioworld Technology, Inc.

Add: 1660 South Highway 100, Suite 500 St. Louis Park, MN 55416, USA.

Email: info@bioworld.com

Tel: 6123263284

Fax: 6122933841

Bioworld technology, co. Ltd.

Add: No 9, weidi road Qixia District Nanjing, 210046, P. R. China.

Email: info@biogol.com

Tel: 0086-025-68037686

Fax: 0086-025-68035151