

## PPP2R5A polyclonal antibody

Catalog: BS5863

Host: Rabbit

Reactivity: Human, Mouse, Rat

### BackGround:

In eukaryotes, the phosphorylation and dephosphorylation of proteins on serine and threonine residues is an essential means of regulating a broad range of cellular functions, including division, homeostasis and apoptosis. A group of proteins that are intimately involved in this process are the protein phosphatases. In general, the protein phosphatase (PP) holoenzyme is a trimeric complex composed of a regulatory subunit, a variable subunit and a catalytic subunit. Four major families of protein phosphatase catalytic subunits have been identified, designated PP1, PP2A, PP2B (calcineurin) and PP2C. An additional protein phosphatase catalytic subunit, PPX (also known as PP4) is a putative member of a novel PP family. The PP2A family comprises subfamily members PP2A $\alpha$  and PP2A $\beta$ . The PP2A catalytic subunit associates with a variety of regulatory subunits. Regulatory subunits include PP2A-A- $\alpha$  and -A- $\beta$ , PP2A-B- $\alpha$  and -B- $\beta$ , PP2A-C- $\alpha$  and -C- $\beta$ , PP2A-B56- $\alpha$ , -B56- $\beta$ , -B56- $\gamma$  and -B56- $\delta$ .

### Product:

1 mg/ml in Phosphate buffered saline (PBS) with 0.05% sodium azide, approx. pH 7.2.

### Molecular Weight:

~ 56 kDa

### Swiss-Prot:

Q15172

### Purification&Purity:

The antibody was affinity-purified from rabbit antiserum by affinity-chromatography using epitope-specific im-

munogen and the purity is > 95% (by SDS-PAGE).

### Applications:

WB: 1:500~1:1000

ICC: 1:50~1:200

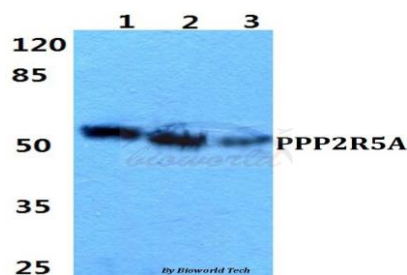
### Storage&Stability:

Store at 4 °C short term. Aliquot and store at -20 °C long term. Avoid freeze-thaw cycles.

### Specificity:

PPP2R5A polyclonal antibody detects endogenous levels of PPP2R5A protein.

### DATA:



Western blot (WB) analysis of PPP2R5A polyclonal antibody at 1:500 dilution

Lane1:Hela cell lysate

Lane2:NIH-3T3 cell lysate

Lane3:H9C2 cell lysate

### Note:

For research use only, not for use in diagnostic procedure.

### Bioworld Technology, Inc.

Add: 1660 South Highway 100, Suite 500 St. Louis Park, MN 55416, USA.

Email: [info@bioworld.com](mailto:info@bioworld.com)

Tel: 6123263284

Fax: 6122933841

### Bioworld technology, co. Ltd.

Add: No 9, weidi road Qixia District Nanjing, 210046, P. R. China.

Email: [info@biogot.com](mailto:info@biogot.com)

Tel: 0086-025-68037686

Fax: 0086-025-68035151