

PLC β 2 polyclonal antibody

Catalog: BS5860

Host: Rabbit

Reactivity: Human, Mouse, Rat

BackGround:

Phosphoinositide-specific phospholipase C (PLC) plays a crucial role in the initiation of receptor mediated signal transduction through the generation of the two second messengers, inositol 1,4,5-triphosphate and diacylglycerol from phosphatidylinositol 4,5-bisphosphate. There are many mammalian PLC isozymes, including PLC β 1, PLC β 2, PLC β 3, PLC β 4, PLC γ 1, PLC γ 2, PLC δ 1, PLC δ 2 and PLC ϵ . PLC β s are the only PLC isforms that are regulated by G protein subunits and are activated by a heterotrimeric GTP-binding protein linked to various cell surface receptors. Two alternatively spliced forms (1,181 and 1,166 amino acids) of PLC β 2 are generated in hematopoietic cells that differ in the carboxyl-terminal sequence implicated in interaction of PLC β enzymes with G α q. The pleckstrin homology domain of PLC β 2 is required for its targeting to the membrane and for substrate hydrolysis and its linker region exerts an inhibitory effect on basal PLC β 2 activity. PLC β 2 plays a major role in platelet activation and is mainly expressed in the periphery of the islet and acinar cells in rat pancreas.

Product:

1 mg/ml in Phosphate buffered saline (PBS) with 0.05% sodium azide, approx. pH 7.2.

Molecular Weight:

~ 133 kDa

Swiss-Prot:

Q00722

Purification&Purity:

The antibody was affinity-purified from rabbit antiserum

by affinity-chromatography using epitope-specific immunogen and the purity is > 95% (by SDS-PAGE).

Applications:

WB: 1:500~1:1000

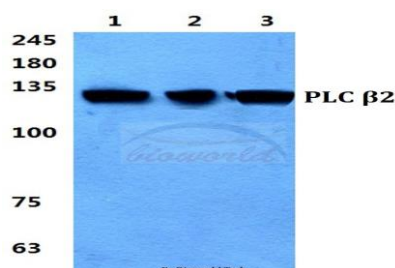
Storage&Stability:

Store at 4 °C short term. Aliquot and store at -20 °C long term. Avoid freeze-thaw cycles.

Specificity:

PLC β 2 polyclonal antibody detects endogenous levels of PLC β 2 protein.

DATA:



Western blot (WB) analysis of PLC β 2 polyclonal antibody at 1:500 dilution

Lane1:Hela cell lysate

Lane2:sp2/0 cell lysate

Lane3:H9C2 cell lysate

Note:

For research use only, not for use in diagnostic procedure.

Bioworld Technology, Inc.

Add: 1660 South Highway 100, Suite 500 St. Louis Park, MN 55416, USA.

Email: info@bioworld.com

Tel: 6123263284

Fax: 6122933841

Bioworld technology, co. Ltd.

Add: No 9, weidi road Qixia District Nanjing, 210046, P. R. China.

Email: info@biogot.com

Tel: 0086-025-68037686

Fax: 0086-025-68035151