

**PHKG1 polyclonal antibody**

Catalog: BS5855

Host: Rabbit

Reactivity: Human, Mouse, Rat

**BackGround:**

PHKG1 (phosphorylase kinase subunit  $\gamma$ 1), is a subunit of phosphorylase kinase (PHK) that belongs to the Ser/Thr protein kinase family. PHK is a hexadecameric protein composed of four  $\alpha$  chains, four  $\beta$  chains, four  $\gamma$  chains and four  $\delta$  chains. The  $\gamma$  chains are catalytic chains, the  $\alpha$  and  $\beta$  chains are regulatory chains and the  $\delta$  chains are calmodulins. PHKG1 contains two calmodulin-binding domains and one protein kinase domain. As the catalytic chain of PHK, PHKG1 is responsible for catalyzing the phosphorylation and activation of glycogen phosphorylase and therefore it plays an important role in the glycogenolytic pathway. Mutations in the gene encoding PHKG1 can lead to PHK deficiency and result in glycogen storage disease type 9C (GSD9C), also known as autosomal liver glycogenosis.

**Product:**

1 mg/ml in Phosphate buffered saline (PBS) with 0.05% sodium azide, approx. pH 7.2.

**Molecular Weight:**

~ 45 kDa

**Swiss-Prot:**

Q16816

**Purification&Purity:**

The antibody was affinity-purified from rabbit antiserum by affinity-chromatography using epitope-specific immunogen and the purity is > 95% (by SDS-PAGE).

**Applications:**

WB: 1:500~1:1000

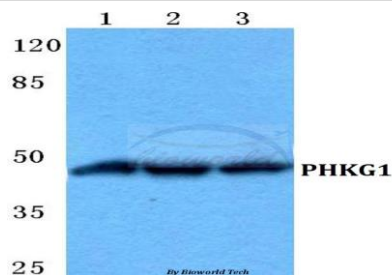
ICC: 1:50~1:200

**Storage&Stability:**

Store at 4 °C short term. Aliquot and store at -20 °C long term. Avoid freeze-thaw cycles.

**Specificity:**

PHKG1 polyclonal antibody detects endogenous levels of PHKG1 protein.

**DATA:**

Western blot (WB) analysis of PHKG1 polyclonal antibody at 1:500 dilution

Lane1:A549 cell lysate

Lane2:Raw264.7 cell lysate

Lane3:Rat brain tissue lysate

**Note:**

For research use only, not for use in diagnostic procedure.

**Bioworld Technology, Inc.**

Add: 1660 South Highway 100, Suite 500 St. Louis Park, MN 55416, USA.

Email: [info@bioworld.com](mailto:info@bioworld.com)

Tel: 6123263284

Fax: 6122933841

**Bioworld technology, co. Ltd.**

Add: No 9, weidi road Qixia District Nanjing, 210046, P. R. China.

Email: [info@biogot.com](mailto:info@biogot.com)

Tel: 0086-025-68037686

Fax: 0086-025-68035151