

PCB polyclonal antibody

Catalog: BS5841

Host: Rabbit

Reactivity: Human, Mouse, Rat

BackGround:

Pyruvate carboxylase (PCB) is a biotinylated mitochondrial enzyme that catalyzes the synthesis of oxaloacetate from pyruvate in a tissue specific manner. In addition to covalently binding the biotin cofactor, PCB contains consensus sequences for the attachment of ATP and the substrate pyruvate. The PCB gene is located on the long arm of chromosome 11. Mutations in PCB metabolism (pyruvate carboxylase deficiency) are known to cause lactic acidosis, hypoglycemia and mental retardation.

Product:

1 mg/ml in Phosphate buffered saline (PBS) with 0.05% sodium azide, approx. pH 7.2.

Molecular Weight:

~ 130 kDa

Swiss-Prot:

P11498

Purification&Purity:

The antibody was affinity-purified from rabbit antiserum by affinity-chromatography using epitope-specific immunogen and the purity is > 95% (by SDS-PAGE).

Applications:

WB: 1:500~1:1000

IHC: 1:50~1:200

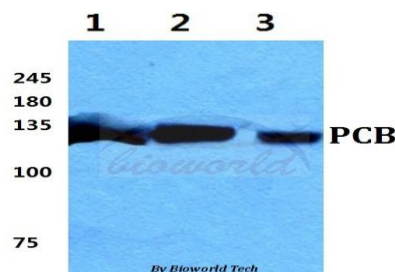
Storage&Stability:

Store at 4 °C short term. Aliquot and store at -20 °C long term. Avoid freeze-thaw cycles.

Specificity:

PCB polyclonal antibody detects endogenous levels of PCB protein.

DATA:

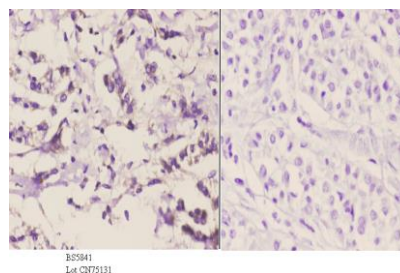


Western blot (WB) analysis of PCB polyclonal antibody at 1:500 dilution

Lane1:HEK293T cell lysate

Lane2:NIH-T3 cell lysate

Lane3:H9C2 cell lysate



Immunohistochemistry (IHC) analyzes of PCB pAb in paraffin-embedded human liver carcinoma tissue at 1:50. showing cytoplasmic staining. Negative control (the right) Using PBS instead of primary antibody, secondary antibody is Goat Anti-Rabbit IgG-biotin followed by avidin-peroxidase.

Note:

For research use only, not for use in diagnostic procedure.

Bioworld Technology, Inc.

Add: 1660 South Highway 100, Suite 500 St. Louis Park, MN 55416, USA.

Email: info@bioworld.com

Tel: 6123263284

Fax: 6122933841

Bioworld technology, co. Ltd.

Add: No 9, weidi road Qixia District Nanjing, 210046, P. R. China.

Email: info@biogot.com

Tel: 0086-025-68037686

Fax: 0086-025-68035151