

SLC9A6 polyclonal antibody

Catalog: BS5823

Host: Rabbit

Reactivity: Human, Mouse, Rat

BackGround:

Na⁺/H⁺ exchangers-1-6 (Na⁺/H⁺ antiporters, NHE-1-6) are integral membrane proteins that are expressed in most mammalian tissues where they regulate intracellular pH and cell volume. NHEs mediate the secondary active extrusion of hydrogen (H⁺) ions out of cells in exchange for extracellular sodium (Na⁺). Excluding NHE-1, which is ubiquitously expressed, the NHE isoforms 2-6 have distinct tissue- and cell type-dependent expression, and inhibitory characteristics by amiloride analogs.

Product:

1 mg/ml in Phosphate buffered saline (PBS) with 0.05% sodium azide, approx. pH 7.2.

Molecular Weight:

~ 74 kDa

Swiss-Prot:

Q92581

Purification&Purity:

The antibody was affinity-purified from rabbit antiserum by affinity-chromatography using epitope-specific immunogen and the purity is > 95% (by SDS-PAGE).

Applications:

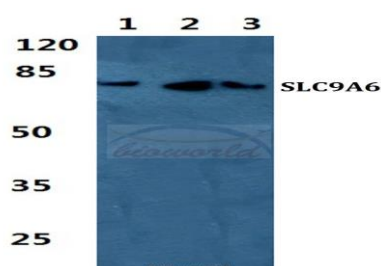
WB: 1:500~1:1000

Storage&Stability:

Store at 4 °C short term. Aliquot and store at -20 °C long term. Avoid freeze-thaw cycles.

Specificity:

SLC9A6 polyclonal antibody detects endogenous levels of SLC9A6 protein.

DATA:

Western blot (WB) analysis of SLC9A6 polyclonal antibody at 1:500 dilution

Lane1: HEK293T cell lysate

Lane2: Raw264.7 cell lysate

Lane3: PC12 cell lysate

Note:

For research use only, not for use in diagnostic procedure.

Bioworld Technology, Inc.

Add: 1660 South Highway 100, Suite 500 St. Louis Park, MN 55416, USA.

Email: info@bioworld.com

Tel: 6123263284

Fax: 6122933841

Bioworld technology, co. Ltd.

Add: No 9, weidi road Qixia District Nanjing, 210046, P. R. China.

Email: info@biogol.com

Tel: 0086-025-68037686

Fax: 0086-025-68035151