

## ILF3 polyclonal antibody

Catalog: BS5821

Host: Rabbit

Reactivity: Human, Mouse, Rat

### BackGround:

NF90 (nuclear factor of activated T-cells 90 kDa), also known as NFAR, DRBF, DRBP76 (double-stranded RNA-binding protein 76), MPP4, MPHOSPH4 (M-phase phosphoprotein 4), ILF3 (interleukin enhancer binding factor 3) or TCP80 (translational control protein 80), is a ubiquitously expressed nuclear protein that exists in a heterodimer with NF45. NF90 contains two DRBM (double-stranded RNA(dsRNA)-binding) domains and one DZF domain and, in association with NF45 primarily participates in the regulation of IL-2 expression by binding to the antigen receptor response element (ARRE) target sequence of the IL-2 enhancer. In neuronal cells, the NF45/NF90 heterodimer can repress human rhinovirus type 2 replication by binding to a 5' untranslated region of the viral RNA that encodes the internal ribosome entry site (IRES). NF45 and NF90 belong to the double-stranded RNA-binding protein family and both are substrates for the dsRNA-activated protein kinase, PKR. Due to alternative splicing events, six isoforms exist for NF90, namely NFAR-2 (or ILF3-E), NFAR-1 (or DRBP76), isoform 3, DRBP76 $\alpha$  (or ILF3-A), DRBP76 $\delta$  (also known as DRBP76 $\gamma$  or ILF3-C) and isoform 6.

### Product:

1 mg/ml in Phosphate buffered saline (PBS) with 0.05% sodium azide, approx. pH 7.2.

### Molecular Weight:

~ 95 kDa

### Swiss-Prot:

Q12906

### Purification&Purity:

The antibody was affinity-purified from rabbit antiserum by affinity-chromatography using epitope-specific immunogen and the purity is > 95% (by SDS-PAGE).

### Applications:

WB: 1:500~1:1000

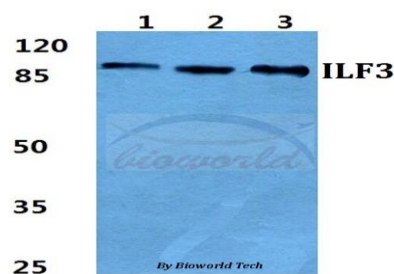
### Storage&Stability:

Store at 4 °C short term. Aliquot and store at -20 °C long term. Avoid freeze-thaw cycles.

### Specificity:

ILF3 polyclonal antibody detects endogenous levels of ILF3 protein.

### DATA:



Western blot (WB) analysis of ILF3 polyclonal antibody at 1:500 dilution

Lane1:MCF-7 cell lysate

Lane2:sp2/0 cell lysate

Lane3:PC12 cell lysate

### Note:

For research use only, not for use in diagnostic procedure.

### Bioworld Technology, Inc.

Add: 1660 South Highway 100, Suite 500 St. Louis Park, MN 55416, USA.

Email: [info@bioworld.com](mailto:info@bioworld.com)

Tel: 6123263284

Fax: 6122933841

### Bioworld technology, co. Ltd.

Add: No 9, weidi road Qixia District Nanjing, 210046, P. R. China.

Email: [info@biogot.com](mailto:info@biogot.com)

Tel: 0086-025-68037686

Fax: 0086-025-68035151