

SLC24A1 polyclonal antibody

Catalog: BS5815

Host: Rabbit

Reactivity: Human, Mouse, Rat

BackGround:

NCKX1, also designated solute carrier family 24, member 1 (SLC24A1) or sodium/calcium/potassium exchanger 1, belongs to a family of potassium-dependent sodium/calcium exchangers. Members of this group of proteins contain two large hydrophilic loops and two sets of multiple transmembrane-spanning segments. One intron in the 5' untranslated region and eight within the coding region of the NCKX1 gene have been identified; exon length varies from 54 to 2,037 bp. Human NCKX1 encodes a protein of 1,081 amino acids that shows 64% overall identity with the cow protein. The two sets of presumed transmembrane domains and their short connecting loops show 94% identity with that of the cow, while the extracellular loop at the amino terminus is only 59% identical.

Product:

1 mg/ml in Phosphate buffered saline (PBS) with 0.05% sodium azide, approx. pH 7.2.

Molecular Weight:

~ 121 kDa

Swiss-Prot:

O60721

Purification&Purity:

The antibody was affinity-purified from rabbit antiserum by affinity-chromatography using epitope-specific immunogen and the purity is > 95% (by SDS-PAGE).

Applications:

WB: 1:500~1:1000

ICC: 1:50~1:200

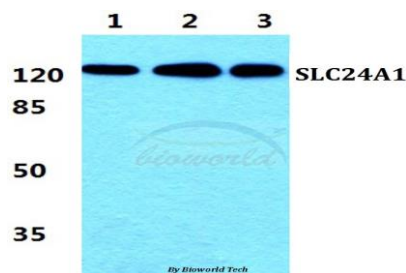
Storage&Stability:

Store at 4 °C short term. Aliquot and store at -20 °C long term. Avoid freeze-thaw cycles.

Specificity:

SLC24A1 polyclonal antibody detects endogenous levels of SLC24A1 protein.

DATA:



Western blot (WB) analysis of SLC24A1 polyclonal antibody at 1:500 dilution

Lane1:Hela cell lysate

Lane2:sp2/0 cell lysate

Lane3:NIH-3T3 cell lysate

Note:

For research use only, not for use in diagnostic procedure.

Bioworld Technology, Inc.

Add: 1660 South Highway 100, Suite 500 St. Louis Park, MN 55416, USA.

Email: info@bioworld.com

Tel: 6123263284

Fax: 6122933841

Bioworld technology, co. Ltd.

Add: No 9, weidi road Qixia District Nanjing, 210046, P. R. China.

Email: info@biogot.com

Tel: 0086-025-68037686

Fax: 0086-025-68035151