

## MYLK polyclonal antibody

Catalog: BS5809

Host: Rabbit

Reactivity: Human

### BackGround:

The Ca<sup>2+</sup>/calmodulin-dependent protein kinases (CaM kinases) are a structurally related subfamily of serine/threonine kinases that includes CaMKI, CaMKII, CaMKIV and myosin light chain kinases (MYLK, also designated MLCK). The MYLK kinases phosphorylate myosin regulatory light chains to catalyze myosin interaction with actin filaments resulting in contractile activity. Non-muscle, smooth muscle and skeletal/cardiac muscle MYLK isoforms exist. The MYLK gene (also designated MYLK1) encodes both smooth muscle and non-muscle isoforms as well as telokin, a small C-terminal isoform expressed only in smooth muscle with the capacity to stabilize unphosphorylated myosin filaments. Multiple transcript variants are described for the MYLK gene. Smooth-muscle and non-muscle MYLK isoforms are expressed in a wide variety of adult and fetal tissues. The skeletal/cardiac muscle isoforms of MYLK are encoded by a separate gene, MYLK2 (also designated skMLCK). MYLK appears to be a target for PAKs (p21-activated kinases). PAK1 interaction with MYLK results in a decrease in MYLK activity and myosin light chain phosphorylation.

### Product:

1 mg/ml in Phosphate buffered saline (PBS) with 0.05% sodium azide, approx. pH 7.2.

### Molecular Weight:

~ 135, 210 kDa

### Swiss-Prot:

Q15746

### Purification&Purity:

The antibody was affinity-purified from rabbit antiserum by affinity-chromatography using epitope-specific immunogen and the purity is > 95% (by SDS-PAGE).

### Applications:

WB: 1:500~1:1000

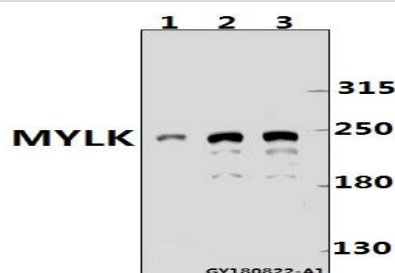
### Storage&Stability:

Store at 4 °C short term. Aliquot and store at -20 °C long term. Avoid freeze-thaw cycles.

### Specificity:

MYLK polyclonal antibody detects endogenous levels of MYLK protein.

### DATA:



Western blot (WB) analysis of MYLK Antibody at 1:500 dilution

Lane1:A375 whole cell lysate(40ug)

Lane2:HCT116 whole cell lysate(40ug)

Lane3:MCF-7 whole cell lysate(40ug)

### Note:

For research use only, not for use in diagnostic procedure.

### Bioworld Technology, Inc.

Add: 1660 South Highway 100, Suite 500 St. Louis Park, MN 55416, USA.

Email: [info@bioworld.com](mailto:info@bioworld.com)

Tel: 6123263284

Fax: 6122933841

### Bioworld technology, co. Ltd.

Add: No 9, weidi road Qixia District Nanjing, 210046, P. R. China.

Email: [info@biogot.com](mailto:info@biogot.com)

Tel: 0086-025-68037686

Fax: 0086-025-68035151