

MPP10 polyclonal antibody

Catalog: BS5799

Host: Rabbit

Reactivity: Human, Mouse, Rat

BackGround:

MPP10 (M-phase phosphoprotein 10), also known as MPHOSPH10, is a 681 amino acid protein that localizes to the fibrillar region of the nucleolus. Phosphorylated in the M (mitotic) phase of the cell cycle, MPP10 is a component of the 60-80S U3 small nucleolar ribonucleoprotein (U3 snoRNP) complex and is required for the early cleavages during pre-18S ribosomal RNA processing. MPP10 forms a heterotrimeric complex with IMP-3 and IMP-4, which may be required for its association with nucleolar components. The gene encoding MPP10 is localized to human chromosome 2, which houses over 500 genes and is the second smallest human chromosome. Mutations in several of the genes that map to chromosome 22 are involved in the development of Pellan-McDermid syndrome, Neurofibromatosis type 2, autism and schizophrenia.

Product:

1 mg/ml in Phosphate buffered saline (PBS) with 0.05% sodium azide, approx. pH 7.2.

Molecular Weight:

~ 79 kDa, 120 kDa (Phosphorylated)

Swiss-Prot:

O00566

Purification&Purity:

The antibody was affinity-purified from rabbit antiserum by affinity-chromatography using epitope-specific immunogen and the purity is > 95% (by SDS-PAGE).

Applications:

WB: 1:500~1:1000

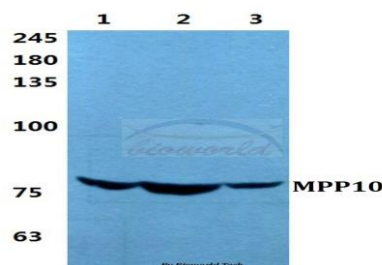
Storage&Stability:

Store at 4 °C short term. Aliquot and store at -20 °C long term. Avoid freeze-thaw cycles.

Specificity:

MPP10 polyclonal antibody detects endogenous levels of MPP10 protein.

DATA:



Western blot (WB) analysis of MPP10 polyclonal antibody at 1:500 dilution

Lane1:HEK293T cell lysate

Lane2:sp2/0 cell lysate

Lane3:H9C2 cell lysate

Note:

For research use only, not for use in diagnostic procedure.

Bioworld Technology, Inc.

Add: 1660 South Highway 100, Suite 500 St. Louis Park, MN 55416, USA.

Email: info@bioworld.com

Tel: 6123263284

Fax: 6122933841

Bioworld technology, co. Ltd.

Add: No 9, weidi road Qixia District Nanjing, 210046, P. R. China.

Email: info@biogot.com

Tel: 0086-025-68037686

Fax: 0086-025-68035151