

## LRG1 polyclonal antibody

Catalog: BS5784

Host: Rabbit

Reactivity: Human, Mouse, Rat

**BackGround:**

LRG1 (leucine-rich alpha-2-glycoprotein), also known as LRG, is a 347 amino acid secreted protein that contains eight LRR (leucine-rich) repeats and one LRRCT domain. The leucine-rich repeat (LRR) family of proteins, including LRG1, have been shown to be involved in protein-protein interaction, signal transduction, cell adhesion and development. Found mainly in plasma, LRG1 is expressed during granulocyte differentiation. The gene that encodes LRG1 consists of nearly 3,000 bases and maps to human chromosome 19p13.3. Chromosome 19 consists of over 63 million bases, houses approximately 1,400 genes and is recognized for having the greatest gene density of the human chromosomes. It is the genetic home for a number of immunoglobulin (Ig) superfamily members, including the killer cell and leukocyte Ig-like receptors, a number of ICAMs, the CEACAM and PSG families and Fc receptors (FcRs).

**Product:**

1mg/ml in PBS with 0.1% Sodium Azide, 50% Glycerol.

**Molecular Weight:**

~ 38 kDa

**Swiss-Prot:**

P02750

**Purification&Purity:**

The antibody was affinity-purified from rabbit antiserum by affinity-chromatography using epitope-specific immunogen and the purity is > 95% (by SDS-PAGE).

**Applications:**

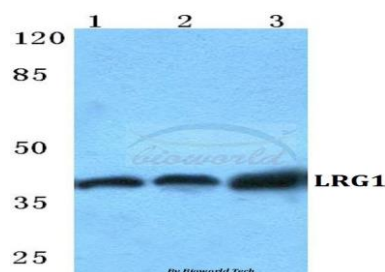
WB: 1:500~1:1000

**Storage&Stability:**

Store at 4 °C short term. Aliquot and store at -20 °C long term. Avoid freeze-thaw cycles.

**Specificity:**

LRG1 polyclonal antibody detects endogenous levels of LRG1 protein.

**DATA:**

Western blot (WB) analysis of LRG1 polyclonal antibody at 1:500 dilution

Lane1:Hela cell lysate

Lane2:Raw264.7 cell lysate

Lane3:H9C2 cell lysate

**Note:**

For research use only, not for use in diagnostic procedure.

**Bioworld Technology, Inc.**

Add: 1660 South Highway 100, Suite 500 St. Louis Park, MN 55416, USA.

Email: [info@bioworld.com](mailto:info@bioworld.com)

Tel: 6123263284

Fax: 6122933841

**Bioworld technology, co. Ltd.**

Add: No 9, weidi road Qixia District Nanjing, 210046, P. R. China.

Email: [info@biogot.com](mailto:info@biogot.com)

Tel: 0086-025-68037686

Fax: 0086-025-68035151