

## BRM polyclonal antibody

Catalog: BS5631

Host: Rabbit

Reactivity: Human, Mouse, Rat

### BackGround:

The Brahma protein (Brm) is an ATPase subunit of the *Drosophila melanogaster* Brm complex, which is highly related to the mammalian SWI/SNF chromatin-remodeling complex. Brm is a transcriptional activator of Hox genes and associates with nearly all transcriptionally active chromatin in a pattern that is non-overlapping with that of Polycomb, a repressor of Hox gene transcription. The Brm complex is an essential coactivator for the trithorax group protein Zeste, a DNA-binding activator of homeotic genes. Reduction of Brm function dramatically reduces the association of RNA polymerase II with *Drosophila* salivary gland chromosomes, suggesting that the chromatin remodeling activity of the Brm complex plays a general role in facilitating transcription by RNA polymerase II. Brm acts as a dominant suppressor of the rough eye phenotype that results from a hypomorphic mutation of *Drosophila* cyclin E by inhibiting S phase entry by acting downstream of cyclin E protein accumulation. The interaction of the Brm complex with chromatin may be modulated by BAP111, which is highly associated with the Brm complex in *Drosophila* embryos via an HMG domain. Brm is highly expressed in unfertilized eggs and early embryos.

### Product:

1mg/ml in PBS with 0.1% Sodium Azide, 50% Glycerol.

### Molecular Weight:

~ 210 kDa

### Swiss-Prot:

P51531

### Purification&Purity:

The antibody was affinity-purified from rabbit antiserum by affinity-chromatography using epitope-specific immunogen and the purity is > 95% (by SDS-PAGE).

### Applications:

WB: 1:500~1:1000

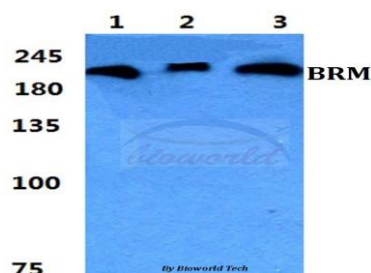
### Storage&Stability:

Store at 4 °C short term. Aliquot and store at -20 °C long term. Avoid freeze-thaw cycles.

### Specificity:

BRM polyclonal antibody detects endogenous levels of BRM protein.

### DATA:



Western blot (WB) analysis of BRM polyclonal antibody at 1:500 dilution

Lane1:Hela cell lysate

Lane2:Mouse brain tissue lysate

Lane3:Rat brain tissue lysate

### Note:

For research use only, not for use in diagnostic procedure.

### Bioworld Technology, Inc.

Add: 1660 South Highway 100, Suite 500 St. Louis Park, MN 55416, USA.

Email: [info@bioworld.com](mailto:info@bioworld.com)

Tel: 6123263284

Fax: 6122933841

### Bioworld technology, co. Ltd.

Add: No 9, weidi road Qixia District Nanjing, 210046, P. R. China.

Email: [info@biogot.com](mailto:info@biogot.com)

Tel: 0086-025-68037686

Fax: 0086-025-68035151