

BCAS2 polyclonal antibody

Catalog: BS5626

Host: Rabbit

Reactivity: Human, Mouse, Rat

BackGround:

BCAS2 (breast carcinoma amplified sequence 2), also designated DAM1 (DNA amplified in mammary carcinoma 1 protein) or spliceosome-associated SPF 27, is a ubiquitously expressed nuclear protein that was originally identified as being overexpressed in various breast cancer cell lines. BCAS2 is now known to be a component of the spliceosome, participating in the removal of introns from mRNA precursors. BCAS2 specifically interacts (in a ligand-independent manner) with TR β (thyroid hormone receptor β), ER α (estrogen receptor α), ER β , PR (progesterone receptor), and PPAR γ (Peroxisome proliferator-activated receptor γ). BCAS2 functions as an ER co-activator and is capable of enhancing ER-mediated transcription. This suggests that BCAS2 is involved in the development of breast cancer.

Product:

1 mg/ml in Phosphate buffered saline (PBS) with 0.05% sodium azide, approx. pH 7.2.

Molecular Weight:

~ 26 kDa

Swiss-Prot:

O75934

Purification&Purity:

The antibody was affinity-purified from rabbit antiserum by affinity-chromatography using epitope-specific immunogen and the purity is > 95% (by SDS-PAGE).

Applications:

WB: 1:500~1:1000

ICC: 1:50~1:200

IP: 1:50~1:200

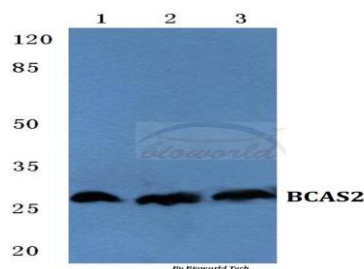
Storage&Stability:

Store at 4 °C short term. Aliquot and store at -20 °C long term. Avoid freeze-thaw cycles.

Specificity:

BCAS2 polyclonal antibody detects endogenous levels of BCAS2 protein.

DATA:



Western blot (WB) analysis of BCAS2 polyclonal antibody at 1:500 dilution

Lane1: HEK293T cell lysate

Lane2: Mouse heart tissue lysate

Lane3: PC12 cell lysate

Note:

For research use only, not for use in diagnostic procedure.

Bioworld Technology, Inc.

Add: 1660 South Highway 100, Suite 500 St. Louis Park, MN 55416, USA.

Email: info@bioworld.com

Tel: 6123263284

Fax: 6122933841

Bioworld technology, co. Ltd.

Add: No 9, weidi road Qixia District Nanjing, 210046, P. R. China.

Email: info@biogot.com

Tel: 0086-025-68037686

Fax: 0086-025-68035151