

## Angptl1 polyclonal antibody

Catalog: BS5611

Host: Rabbit

Reactivity: Human, Mouse, Rat

### BackGround:

Angptl1 (angiopoietin-like 1), also known as angioarrestin, ARP1, ANGPT3 or previously known as angiopoietin 3 (ANG3), is a member of the angiopoietin-like family. It is highly expressed in adult tissues, particularly adrenal gland, thyroid, placenta and small intestine. Angptl1 exists as a disulfide-linked dimer and shares 45.1% identity with Ang-1 and 59% identity with Angptl2. Angptl1 consists of an N-terminus with a coiled-coil domain, potential glycosylation sites and a C-terminus with a fibrinogen-like domain. It is a secreted protein but does not function as a growth factor in endothelial cells. Angptl1 plays a distinct role in the regulation of angiogenesis; inhibiting proliferation, migration, tube formation and endothelial cell adhesion. To exert this inhibitory activity, Angptl1 is speculated to interact with a receptor on endothelial cells. In a wide variety of tumor tissues, Angptl1 expression is down-regulated suggesting that a major function of this protein involves its antiangiogenic properties.

### Product:

1 mg/ml in Phosphate buffered saline (PBS) with 0.05% sodium azide, approx. pH 7.2.

### Molecular Weight:

~ 56 kDa

### Swiss-Prot:

O95841

### Purification&Purity:

The antibody was affinity-purified from rabbit antiserum by affinity-chromatography using epitope-specific immunogen and the purity is > 95% (by SDS-PAGE).

### Applications:

WB: 1:500~1:1000

IHC: 1:50~1:200

### Storage&Stability:

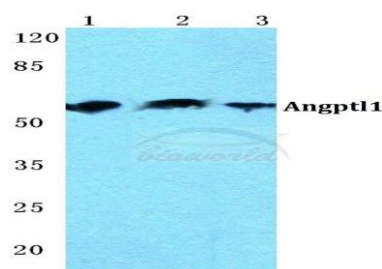
Store at 4 °C short term. Aliquot and store at -20 °C long

term. Avoid freeze-thaw cycles.

### Specificity:

Angptl1 polyclonal antibody detects endogenous levels of Angptl1 protein.

### DATA:

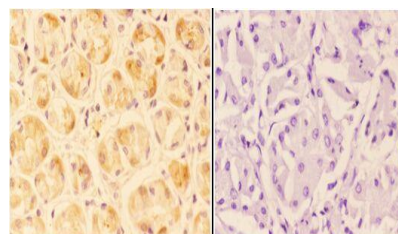


Western blot (WB) analysis of Angptl1 polyclonal antibody at 1:500 dilution

Lane1:Hela cell lysate

Lane2:Mouse liver tissue lysate

Lane3:Rat spleen tissue lysate



BS5611  
Lot CN73131

Immunohistochemistry (IHC) analyzes of Angptl1 pAb in paraffin-embedded human stomach carcinoma tissue at 1:50, showing secreted staining. Negative control (the right) Using PBS instead of primary antibody, secondary antibody is Goat Anti-Rabbit IgG-biotin followed by avidin-peroxidase.

### Note:

For research use only, not for use in diagnostic procedure.

### Bioworld Technology, Inc.

Add: 1660 South Highway 100, Suite 500 St. Louis Park, MN 55416, USA.

Email: [info@bioworld.com](mailto:info@bioworld.com)

Tel: 6123263284

Fax: 6122933841

### Bioworld technology, co. Ltd.

Add: No 9, weidi road Qixia District Nanjing, 210046, P. R. China.

Email: [info@biogot.com](mailto:info@biogot.com)

Tel: 0086-025-68037686

Fax: 0086-025-68035151



## PRODUCT DATA SHEET

Bioworld Technology, Inc.

---

---

### **Bioworld Technology, Inc.**

Add: 1660 South Highway 100, Suite 500 St. Louis Park,  
MN 55416, USA.

Email: [info@bioworld.com](mailto:info@bioworld.com)

Tel: 6123263284

Fax: 6122933841

### **Bioworld technology, co. Ltd.**

Add: No 9, weidi road Qixia District Nanjing, 210046,  
P. R. China.

Email: [info@biogot.com](mailto:info@biogot.com)

Tel: 0086-025-68037686

Fax: 0086-025-68035151