

## Stat1 (phospho-S727) polyclonal antibody

Catalog: BS4877

Host: Rabbit

Reactivity: Human, Mouse, Rat

### BackGround:

Signal transducer and activator of transcription that mediates signaling by interferons (IFNs). Following type I IFN (IFN- $\alpha$  and IFN- $\beta$ ) binding to cell surface receptors, Jak kinases (TYK2 and JAK1) are activated, leading to tyrosine phosphorylation of STAT1 and STAT2. The phosphorylated STATs dimerize, associate with ISGF3G/IRF-9 to form a complex termed ISGF3 transcription factor, that enters the nucleus. ISGF3 binds to the IFN stimulated response element (ISRE) to activate the transcription of interferon stimulated genes, which drive the cell in an antiviral state. In response to type II IFN (IFN- $\gamma$ ), STAT1 is tyrosine- and serine-phosphorylated. It then forms a homodimer termed IFN- $\gamma$ -activated factor (GAF), migrates into the nucleus and binds to the IFN  $\gamma$  activated sequence (GAS) to drive the expression of the target genes, inducing a cellular antiviral state.

### Product:

1 mg/ml in Phosphate buffered saline (PBS) with 0.05% sodium azide, approx. pH 7.2.

### Molecular Weight:

~ 87 kDa

### Swiss-Prot:

P42224

### Purification&Purity:

The antibody was affinity-purified from rabbit antiserum by affinity-chromatography using epitope-specific immunogen and the purity is > 95% (by SDS-PAGE).

### Applications:

WB: 1:500~1:1000

IHC: 1:50~1:200

ICC: 1:50~1:200

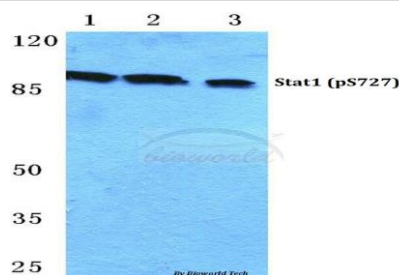
### Storage&Stability:

Store at 4 °C short term. Aliquot and store at -20 °C long term. Avoid freeze-thaw cycles.

### Specificity:

p-Stat1 (S727) polyclonal antibody detects endogenous levels of Stat1 protein only when phosphorylated at Ser727.

### DATA:



Western blot (WB) analysis of p-Stat1 (S727) polyclonal antibody at 1:500 dilution

Lane1:MCF-7 cell lysate treated with UV(4h)

Lane2:Raw264.7 cell lysate treated with EGF(0.1ng/ML,30mins)

Lane3:H9C2 cell lysate treated with EGF(0.1ng/ML,30mins)

### Note:

For research use only, not for use in diagnostic procedure.

### Bioworld Technology, Inc.

Add: 1660 South Highway 100, Suite 500 St. Louis Park, MN 55416, USA.

Email: [info@bioworld.com](mailto:info@bioworld.com)

Tel: 6123263284

Fax: 6122933841

### Bioworld technology, co. Ltd.

Add: No 9, weidi road Qixia District Nanjing, 210046, P. R. China.

Email: [info@biogol.com](mailto:info@biogol.com)

Tel: 0086-025-68037686

Fax: 0086-025-68035151