

p70 S6K (phospho-T421) polyclonal antibody

Catalog: BS4853

Host: Rabbit

Reactivity: Human, Mouse, Rat

BackGround:

p70 S6 kinase is a mitogen activated Ser/Thr protein kinase that is required for cell growth and G1 cell cycle progression. p70 S6 kinase phosphorylates the S6 protein of the 40S ribosomal subunit and is involved in translational control of 5' oligopyrimidine tract mRNAs. A second isoform, p85 S6 kinase, is derived from the same gene and is identical to p70 S6 kinase except for 23 extra residues at the amino terminus, which encode a nuclear localizing signal. Ser411, Thr421 and Ser424 lie within a Ser-Pro-rich region located in the pseudosubstrate region. Phosphorylation at these sites is thought to activate p70 S6 kinase via relief of pseudosubstrate suppression. Another LY294002 and rapamycin sensitive phosphorylation site, Ser371, is an in vitro substrate for mTOR and correlates well with the activity of a partially rapamycin resistant mutant p70 S6 kinase.

Product:

Rabbit IgG, 1mg/ml in PBS with 0.02% sodium azide, 50% glycerol, pH7.2

Molecular Weight:

~70 kDa

Swiss-Prot:

P23443

Purification&Purity:

The antibody was affinity-purified from rabbit antiserum by affinity-chromatography using epitope-specific immunogen and the purity is > 95% (by SDS-PAGE).

Applications:

WB: 1:500~1:1000

IHC: 1:50~1:200

Storage&Stability:

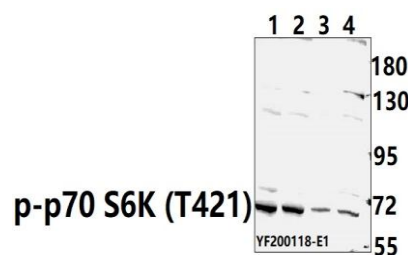
Store at 4 °C short term. Aliquot and store at -20 °C long term. Avoid freeze-thaw cycles.

Specificity:

p-p70 S6K (T421) polyclonal antibody detects endoge-

nous levels of p70 S6 kinase only when phosphorylated at Thr421. This antibody also detects p85 S6 kinase when phosphorylated at Thr444.

DATA:



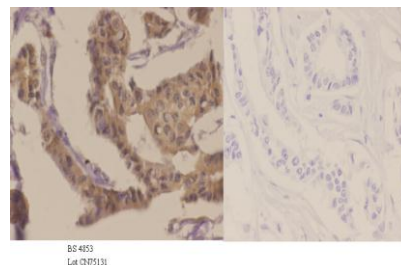
Western blot (WB) analysis of p-p70 S6K (T421) polyclonal antibody at 1:500 dilution

Lane1: HEK293T cell lysate treated with PMA(100nM, 30mins)(40ug)

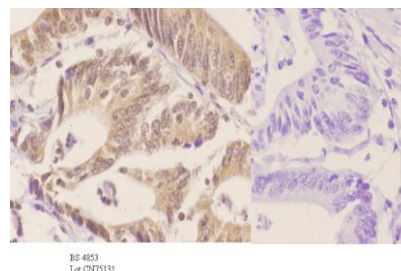
Lane2: HEK293T cell lysate treated with PMA(100nM, 15mins)(40ug)

Lane3: HEK293T cell lysate treated with PMA(100nM, 5mins)(40ug)

Lane4: HEK293T cell whole cell lysate(40ug)



Immunohistochemistry (IHC) analyzes of p-p70 S6K (T421) pAb in paraffin-embedded human breast carcinoma tissue at 1:50. showing cytoplasmic and nucleus staining. Negative control (the right) Using PBS instead of primary antibody, secondary antibody is Goat Anti-Rabbit IgG-biotin followed by avidin-peroxidase.



Bioworld Technology, Inc.

Add: 1660 South Highway 100, Suite 500 St. Louis Park, MN 55416, USA.

Email: info@bioworld.com

Tel: 6123263284

Fax: 6122933841

Bioworld technology, co. Ltd.

Add: No 9, weidi road Qixia District Nanjing, 210046, P. R. China.

Email: info@biogot.com

Tel: 0086-025-68037686

Fax: 0086-025-68035151



PRODUCT DATA SHEET

Bioworld Technology, Inc.

Immunohistochemistry (IHC) analyzes of p-p70 S6K (T421) pAb in paraffin-embedded human colon carcinoma tissue at 1:50. showing cytoplasmic and nucleus staining. Negative control (the right) Using PBS instead of primary antibody, secondary antibody is Goat Anti-Rabbit IgG-biotin followed by avidin-peroxidase.

Note:

For research use only, not for use in diagnostic procedure.

Bioworld Technology, Inc.

Add: 1660 South Highway 100, Suite 500 St. Louis Park, MN 55416, USA.

Email: info@bioworld.com

Tel: 6123263284

Fax: 6122933841

Bioworld technology, co. Ltd.

Add: No 9, weidi road Qixia District Nanjing, 210046, P. R. China.

Email: info@biogot.com

Tel: 0086-025-68037686

Fax: 0086-025-68035151