

MYL9 (phospho-S19) polyclonal antibody

Catalog: BS4845

Host: Rabbit

Reactivity: Human, Mouse, Rat

BackGround:

Myosin regulatory light chains, including MRCL3 (also known as MRLC3 or MLCB), MRLC2 (also known as MLC-B) and MYL9 (also known as LC20, MLC2, MRLC1 or MYRL2), regulate contraction in smooth muscle and non-muscle cells via phosphorylation by myosin light chain kinase (MLCK). Phosphorylation of myosin regulatory light chains, catalyzed by MLCK in the presence of calcium and calmodulin, increases the Actin-activated myosin ATPase activity, thereby regulating the contractile activity. Myosin light chain is also located in striated skeletal muscle, where its function remains undefined.

Product:

1 mg/ml in Phosphate buffered saline (PBS) with 0.05% sodium azide, approx. pH 7.2.

Molecular Weight:

~ 20 kDa

Swiss-Prot:

P24844/P19105

Purification&Purity:

The antibody was affinity-purified from rabbit antiserum by affinity-chromatography using epitope-specific immunogen and the purity is > 95% (by SDS-PAGE).

Applications:

WB: 1:500~1:1000

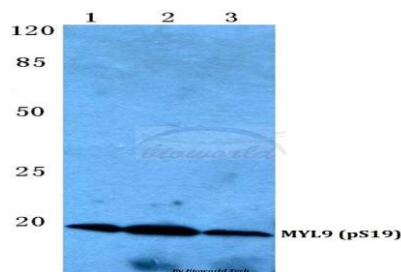
Storage&Stability:

Store at 4 °C short term. Aliquot and store at -20 °C long term. Avoid freeze-thaw cycles.

Specificity:

p-MYL9 (S19) polyclonal antibody detects endogenous levels of MYL9 protein only when phosphorylated at Ser19. This antibody may detect endogenous levels of MYL12A protein only when phosphorylated at Ser18.

DATA:



Western blot (WB) analysis of p-MYL9 (S19) polyclonal antibody at 1:500 dilution

Lane1: LO2 cell lysate treated with EGF (EGF, 0.1 ng/mL, 30 min)

Lane2: Raw264.7 cell lysate treated with EGF (EGF, 0.1 ng/mL, 30 min)

Lane3: Rat heart tissue lysate

Note:

For research use only, not for use in diagnostic procedure.

Bioworld Technology, Inc.

Add: 1660 South Highway 100, Suite 500 St. Louis Park, MN 55416, USA.

Email: info@bioworld.com

Tel: 6123263284

Fax: 6122933841

Bioworld technology, co. Ltd.

Add: No 9, weidi road Qixia District Nanjing, 210046, P. R. China.

Email: info@biogot.com

Tel: 0086-025-68037686

Fax: 0086-025-68035151