

## p27 Kip1 (phospho-T187) polyclonal antibody

Catalog: BS4838

Host: Rabbit

Reactivity: Human, Mouse, Rat

### BackGround:

Cell cycle progression is regulated by a series of cyclin-dependent kinases that consist of catalytic subunits, designated Cdk, and activating subunits, designated cyclins. Orderly progression through the cell cycle requires the activation and inactivation of different cyclin-Cdk at appropriate times. A series of proteins has been recently described that function as “mitotic inhibitors.” These include p21, the levels of which are elevated upon DNA damage in G1 in a p53-dependent manner, p16 and a more recently described p16 related inhibitor designated p15. A p21 related protein, p27, has been described as a negative regulator of G1 progression and has been speculated to function as a possible mediator of TGFβ-induced G1 arrest. p27 interacts strongly with D-type cyclins and Cdk4 in vitro and to a lesser extent with cyclin E and Cdk2.

### Product:

1 mg/ml in Phosphate buffered saline (PBS) with 0.05% sodium azide, approx. pH 7.2.

### Molecular Weight:

~ 27 kDa

### Swiss-Prot:

P46527

### Purification&Purity:

The antibody was affinity-purified from rabbit antiserum by affinity-chromatography using epitope-specific immunogen and the purity is > 95% (by SDS-PAGE).

### Applications:

WB: 1:500~1:1000

IHC: 1:50~1:200

### Storage&Stability:

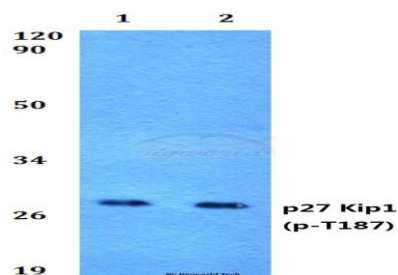
Store at 4 °C short term. Aliquot and store at -20 °C long term. Avoid freeze-thaw cycles.

### Specificity:

p-p27 Kip1 (T187) polyclonal antibody detects endoge-

nous levels of p27 Kip1 protein when phosphorylated at Thr187.

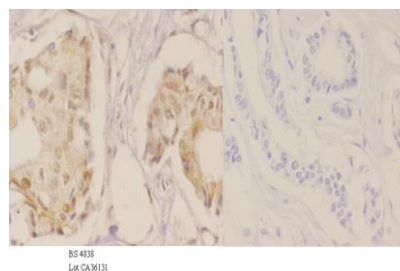
### DATA:



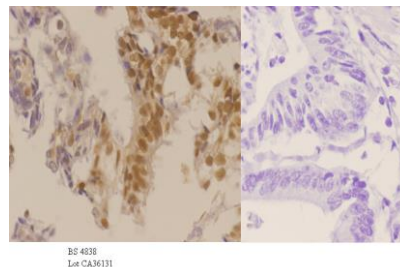
Western blot (WB) analysis of p-p27 Kip1 (T187) polyclonal antibody at 1:500 dilution

Lane1: HEK293T cell lysate treated with IL-1β (2ng/ml, 15mins)

Lane2: Raw264.7 cell lysate treated with IL-1β (2ng/ml, 15mins)



Immunohistochemistry (IHC) analyzes of p-p27 Kip1 (T187) pAb in paraffin-embedded human breast carcinoma tissue at 1:50. showing cytoplasmic and nucleus staining. Negative control (the right) Using PBS instead of primary antibody, secondary antibody is Goat Anti-Rabbit IgG-biotin followed by avidin-peroxidase.



Immunohistochemistry (IHC) analyzes of p-p27 Kip1 (T187) pAb in paraffin-embedded human colon carcinoma tissue at 1:50. showing cytoplasmic and nucleus staining. Negative control (the right) Using PBS

### Bioworld Technology, Inc.

Add: 1660 South Highway 100, Suite 500 St. Louis Park, MN 55416, USA.

Email: [info@bioworld.com](mailto:info@bioworld.com)

Tel: 6123263284

Fax: 6122933841

### Bioworld technology, co. Ltd.

Add: No 9, weidi road Qixia District Nanjing, 210046, P. R. China.

Email: [info@biogot.com](mailto:info@biogot.com)

Tel: 0086-025-68037686

Fax: 0086-025-68035151



## PRODUCT DATA SHEET

Bioworld Technology, Inc.

instead of primary antibody, secondary antibody is Goat Anti-Rabbit  
IgG-biotin followed by avidin-peroxidase.

**Note:**

For research use only, not for use in diagnostic procedure.

---

**Bioworld Technology, Inc.**

Add: 1660 South Highway 100, Suite 500 St. Louis Park,  
MN 55416, USA.

Email: [info@bioworld.com](mailto:info@bioworld.com)

Tel: 6123263284

Fax: 6122933841

**Bioworld technology, co. Ltd.**

Add: No 9, weidi road Qixia District Nanjing, 210046,  
P. R. China.

Email: [info@biogot.com](mailto:info@biogot.com)

Tel: 0086-025-68037686

Fax: 0086-025-68035151