

Cdk1/Cdc2 (phospho-Y15) polyclonal antibody

Catalog: BS4758

Host: Rabbit

Reactivity: Human, Mouse, Rat

BackGround:

Cdc2, an evolutionarily conserved serine/threonine-specific protein kinase, is essential in the cell cycle transition from G2 to M phase. Cdc2 is regulated by association with B-type cyclins and by reversible phosphorylation. Cyclin B binding facilitates the phosphorylation of Cdc2 p34 on three regulatory sites: threonine 14, tyrosine 15, and threonine 161. In higher eukaryotes, Cdc2 is negatively regulated by phosphorylation of two residues located in the ATP-binding site, Thr 14 and Tyr 15. Cdc2 is positively regulated by the cyclin-dependent phosphorylation of Thr 161. Both phosphorylation and de-phosphorylation at Thr 161 are required for progression through the cell cycle.

Product:

1 mg/ml in Phosphate buffered saline (PBS) with 0.05% sodium azide, approx. pH 7.2.

Molecular Weight:

~ 34 kDa

Swiss-Prot:

P06493

Purification&Purity:

The antibody was affinity-purified from rabbit antiserum by affinity-chromatography using epitope-specific immunogen and the purity is > 95% (by SDS-PAGE).

Applications:

WB: 1:500~1:1000

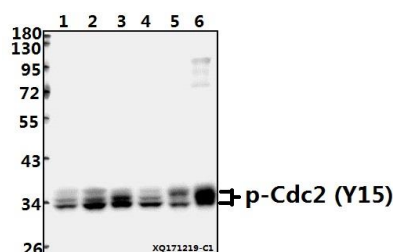
Storage&Stability:

Store at 4 °C short term. Aliquot and store at -20 °C long term. Avoid freeze-thaw cycles.

Specificity:

p-Cdk1/Cdc2 (Y15) polyclonal antibody detects endogenous levels of Cdk1/Cdc2 protein only when phosphorylated at Tyr15.

DATA:



Western blot (WB) analysis of p-Cdc2 (Y15) pAb at 1:500 dilution

Lane1: MCF-7 whole cell lysate (40ug)

Lane2: HEK293T whole cell lysate (40ug)

Lane3: SGC7901 whole cell lysate (40ug)

Lane4: PC3 whole cell lysate (40ug)

Lane5: PC12 whole cell lysate (40ug)

Lane6: BV2 whole cell lysate (40ug)

Note:

For research use only, not for use in diagnostic procedure.

Bioworld Technology, Inc.

Add: 1660 South Highway 100, Suite 500 St. Louis Park, MN 55416, USA.

Email: info@bioworld.com

Tel: 6123263284

Fax: 6122933841

Bioworld technology, co. Ltd.

Add: No 9, weidi road Qixia District Nanjing, 210046, P. R. China.

Email: info@biogot.com

Tel: 0086-025-68037686

Fax: 0086-025-68035151