

PI3K p85α/p55γ (phospho-Y467/Y199) polyclonal antibody

Catalog: BS4605

Host: Rabbit

Reactivity: Human, Mouse, Rat

BackGround:

The enzyme phosphatidylinositol 3 kinase (PI3 kinase) is a lipid kinase that generates phosphatidylinositol 3, 4, 5-triphosphate in response to receptor activation in many signal transduction pathways. Class IA PI3Ks exist as a heterodimer of a catalytic 110 kDa (p110) and a regulatory p85 subunit (e.g. p85 α). p85 α is an adaptor molecule that regulates the activity of the catalytic p110 subunit by binding to phosphorylated receptor tyrosine kinases (RTKs) through its SH2 domain and mediating the interaction between p110 and the plasma membrane. p85 α is necessary for insulin-stimulated increase in glucose uptake and glycogen synthesis in insulin-sensitive tissues.

Product:

1 mg/ml in Phosphate buffered saline (PBS) with 0.05% sodium azide, approx. pH 7.2.

Molecular Weight:

~ 55, 85 kDa

Swiss-Prot:

P27986/Q92569

Purification&Purity:

The antibody was affinity-purified from rabbit antiserum by affinity-chromatography using epitope-specific immunogen and the purity is > 95% (by SDS-PAGE).

Applications:

WB: 1:500~1:1000

IHC: 1:50~1:200

IF: 1:50~1:200

Storage&Stability:

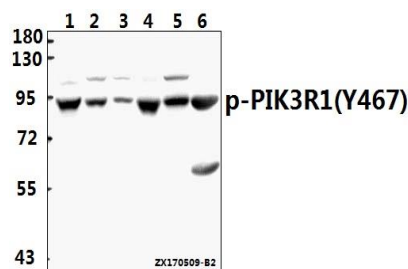
Store at 4 °C short term. Aliquot and store at -20 °C long term. Avoid freeze-thaw cycles.

Specificity:

PI3K p85α/p55γ (phospho-Y467/Y199) polyclonal antibody detects endogenous levels of PI3K p85α only when

phosphorylated at Tyr467. This antibody also detects PI3K p55γ when phosphorylated at Tyr199.

DATA:



Western blot (WB) analysis of PI3K p85α/p55γ (phospho-Y467/Y199) polyclonal antibody at 1:500 dilution

Lane1: COS-7 whole cell lysate (40ug)

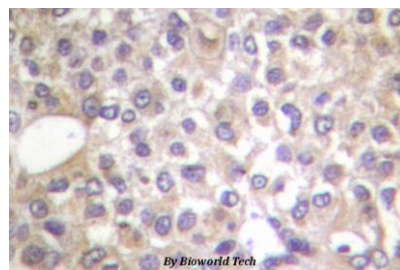
Lane2: H1792 whole cell lysate (40ug)

Lane3: MG63 whole cell lysate (40ug)

Lane4: The Brain tissue lysate of Rat (40ug)

Lane5: MEF whole cell lysate (40ug)

Lane6: The Heart tissue lysate of Rat (40ug)



Immunohistochemistry (IHC) analyzes of p-PI3K p85α (Y467)/p55γ (Y199) pAb in paraffin-embedded human breast carcinoma tissue.

Note:

For research use only, not for use in diagnostic procedure.

Bioworld Technology, Inc.

Add: 1660 South Highway 100, Suite 500 St. Louis Park, MN 55416, USA.

Email: info@bioworld.com

Tel: 6123263284

Fax: 6122933841

Bioworld technology, co. Ltd.

Add: No 9, weidi road Qixia District Nanjing, 210046, P. R. China.

Email: info@biogot.com

Tel: 0086-025-68037686

Fax: 0086-025-68035151