

## Casein Kinase I $\alpha$ (phospho-Y321) polyclonal antibody

Catalog: BS4602

Host: Rabbit

Reactivity: Human, Mouse, Rat

### BackGround:

Casein kinase I (also designated CKI) and casein kinase II (also designated CKII) compose a family of serine/threonine protein kinases which are present in all eukaryotes examined to date. CKI family members, which include CKI $\alpha$ ,  $\beta$ ,  $\gamma$ ,  $\epsilon$  and  $\delta$ , have been implicated in the control of cytoplasmic and nuclear processes, including DNA replication and repair. CKII is usually expressed as a tetrameric complex consisting of either an  $\alpha 2\beta 2$  or an  $\alpha\alpha'\beta 2$  structure. The  $\alpha$  catalytic subunit is stimulated by the  $\beta$  regulatory subunit, which undergoes autophosphorylation. CKII activity is high in the cytosol and nucleus of proliferating and differentiating cells. CKII is known to phosphorylate more than 100 different substrates including nuclear oncoproteins, transcription factors and enzymes involved in DNA metabolism.

### Product:

1 mg/ml in Phosphate buffered saline (PBS) with 0.05% sodium azide, approx. pH 7.3.

### Molecular Weight:

~ 34 kDa

### Swiss-Prot:

P48729

### Purification&Purity:

The antibody was affinity-purified from rabbit antiserum by affinity-chromatography using epitope-specific immunogen and the purity is > 95% (by SDS-PAGE).

### Applications:

WB: 1:500~1:1000

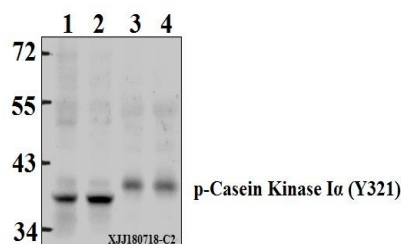
### Storage&Stability:

Store at 4 °C short term. Aliquot and store at -20 °C long term. Avoid freeze-thaw cycles.

### Specificity:

p-Casein Kinase I $\alpha$  (Y321) pAb detects endogenous levels of Casein Kinase I $\alpha$  protein only when phosphorylated at Tyr321.

### DATA:



Western blot (WB) analysis of p-Casein Kinase I $\alpha$  (Y321) pAb at 1:500 dilution

Lane1: HEK293T whole cell lysate (40  $\mu$ g)

Lane2: L02 whole cell lysate (40  $\mu$ g)

Lane3: The Brain tissue lysate of Mouse (40  $\mu$ g)

Lane4: The Brain tissue lysate of Rat (40  $\mu$ g)

### Note:

For research use only, not for use in diagnostic procedure.

### Bioworld Technology, Inc.

Add: 1660 South Highway 100, Suite 500 St. Louis Park, MN 55416, USA.

Email: [info@bioworld.com](mailto:info@bioworld.com)

Tel: 6123263284

Fax: 6122933841

### Bioworld technology, co. Ltd.

Add: No 9, weidi road Qixia District Nanjing, 210046, P. R. China.

Email: [info@biogol.com](mailto:info@biogol.com)

Tel: 0086-025-68037686

Fax: 0086-025-68035151