

Tuberin Recombinant Rabbit mAb

Catalog: BS45157

Host: Rabbit

Reactivity: Human

BackGround:

Mutations in this gene lead to tuberous sclerosis complex. Its gene product is believed to be a tumor suppressor and is able to stimulate specific GTPases. The protein associates with hamartin in a cytosolic complex, possibly acting as a chaperone for hamartin. Alternative splicing results in multiple transcript variants encoding different isoforms. [provided by RefSeq, Jul 2008]

Product:

Store at -20 °C. Supplied in 50mM Tris-Glycine(pH 7.4), 0.15M NaCl, 40%Glycerol, 0.01% sodium azide and 0.05% BSA. Stable for 12 months from date of receipt.

Molecular Weight:

201 kDa

Swiss-Prot:

P49815

Purification&Purity:

Affinity Purification

Applications:

WB: 1:5000 IHC: 1:20 ICC/IF: 1:20 FC:

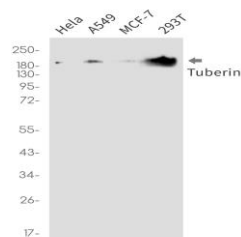
1:200-1:1000 IP: 1:20

Storage&Stability:

Store at 4 °C short term. Aliquot and store at -20 °C long term. Avoid freeze-thaw cycles.

Isotype:

IgG

DATA:


Western blot detection of Tuberin in HeLa, A549, MCF-7, 293T cell lysates using Tuberin antibody (1:1000 diluted).

Note:

For research use only, not for use in diagnostic procedure.

Bioworld Technology, Inc.

Add: 1660 South Highway 100, Suite 500 St. Louis Park, MN 55416, USA.

 Email: info@bioworld.com

Tel: 6123263284

Fax: 6122933841

Bioworld technology, co. Ltd.

Add: No 9, weidi road Qixia District Nanjing, 210046, P. R. China.

 Email: info@biogot.com

Tel: 0086-025-68037686

Fax: 0086-025-68035151