

CaMKII alpha Recombinant Rabbit mAb

Catalog: BS45097

Host: Rabbit

Reactivity: Human, Mouse, Rat

BackGround:

The product of this gene belongs to the serine/threonine protein kinases family, and to the Ca(2+)/calmodulin-dependent protein kinases subfamily. Calcium signaling is crucial for several aspects of plasticity at glutamatergic synapses. This calcium calmodulin-dependent protein kinase is composed of four different chains: alpha, beta, gamma, and delta. The alpha chain encoded by this gene is required for hippocampal long-term potentiation (LTP) and spatial learning. In addition to its calcium-calmodulin (CaM)-dependent activity, this protein can undergo autophosphorylation, resulting in CaM-independent activity. Several transcript variants encoding distinct isoforms have been identified for this gene. [provided by RefSeq, Jun 2018]

Product:

Store at -20 °C. Supplied in 50mM Tris-Glycine(pH 7.4), 0.15M NaCl, 40%Glycerol, 0.01% sodium azide and 0.05% BSA. Stable for 12 months from date of receipt.

Molecular Weight:

54 kDa

Swiss-Prot:

Q9UQM7

Purification&Purity:

Affinity Purification

Applications:

WB: 1:5000-1:20000
FC: 1:200-1:1000

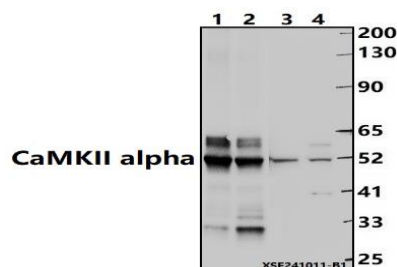
Storage&Stability:

Store at 4 °C short term. Aliquot and store at -20 °C long term. Avoid freeze-thaw cycles.

Isotype:

IgG

DATA:



Western blot (WB) analysis of CaMKII alpha Recombinant Rabbit mAb at 1:500 dilution

Lane1:The Brain tissue lysate of Mouse(10ug)

Lane2:The Brain tissue lysate of Rat(10ug)

Lane3:U-87MG whole cell lysate(30ug)

Lane4:HEK293T whole cell lysate(40ug)

Note:

For research use only, not for use in diagnostic procedure.

Bioworld Technology, Inc.

Add: 1660 South Highway 100, Suite 500 St. Louis Park, MN 55416, USA.

 Email: info@bioworld.com

Tel: 6123263284

Fax: 6122933841

Bioworld technology, co. Ltd.

Add: No 9, weidi road Qixia District Nanjing, 210046, P. R. China.

 Email: info@biogot.com

Tel: 0086-025-68037686

Fax: 0086-025-68035151