

# Phospho-Cannabinoid Receptor I (Ser316) Recombinant Rabbit mAb

Catalog: BS43141

Host: Rabbit

Reactivity: Human

## BackGround:

This gene encodes one of two cannabinoid receptors. The cannabinoids, principally delta-9-tetrahydrocannabinol and synthetic analogs, are psychoactive ingredients of marijuana. The cannabinoid receptors are members of the guanine-nucleotide-binding protein (G-protein) coupled receptor family, which inhibit adenylate cyclase activity in a dose-dependent, stereoselective and pertussis toxin-sensitive manner. The two receptors have been found to be involved in the cannabinoid-induced CNS effects (including alterations in mood and cognition) experienced by users of marijuana. Multiple transcript variants encoding two different protein isoforms have been described for this gene. [provided by RefSeq, May 2009]

## Product:

Store at -20 °C. Supplied in 50mM Tris-Glycine(pH 7.4), 0.15M NaCl, 40%Glycerol, 0.01% sodium azide and 0.05% BSA. Stable for 12 months from date of receipt.

## Molecular Weight:

53 kDa

## Swiss-Prot:

P21554

## Purification&Purity:

Affinity Purification

## Applications:

WB: 1:1000&lt;br /&gt;FC: 1:50

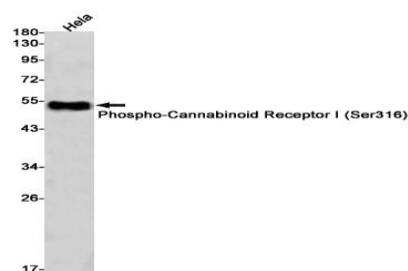
## Storage&Stability:

Store at 4 °C short term. Aliquot and store at -20 °C long term. Avoid freeze-thaw cycles.

## Isotype:

IgG

## DATA:



Western blot detection of Phospho-Cannabinoid Receptor I (Ser316) in HeLa cell lysates using Phospho-Cannabinoid Receptor I (Ser316) antibody(1:1000 diluted).

## Note:

For research use only, not for use in diagnostic procedure.

## Bioworld Technology, Inc.

Add: 1660 South Highway 100, Suite 500 St. Louis Park, MN 55416, USA.

Email: [info@bioworld.com](mailto:info@bioworld.com)

Tel: 6123263284

Fax: 6122933841

## Bioworld technology, co. Ltd.

Add: No 9, weidi road Qixia District Nanjing, 210046, P. R. China.

Email: [info@biogot.com](mailto:info@biogot.com)

Tel: 0086-025-68037686

Fax: 0086-025-68035151