

## EGFR (phospho-Y992) polyclonal antibody

Catalog: BS4310

Host: Rabbit

Reactivity: Human, Mouse, Rat

**BackGround:**

Epidermal growth factor mediates its effects on cell growth through its interaction with a cell surface glycoprotein designated the EGF receptor. Binding of EGF or TGF $\alpha$  to the EGF receptor activates tyrosine-specific protein kinase activity intrinsic to the EGF receptor. The carboxy-terminal tyrosine residues on EGFR, Tyr 1068 and Tyr 1173, are the major sites of autophosphorylation, which occurs as a result of EGF binding. Phosphorylation of Tyr 992, Tyr 1068 and Tyr 1086 is required for conformational change in the C-terminal tail of the EGF receptor, regulates Actin filament accumulation at the plasma membrane and Cdc42 stimulates formation of filopodia.

**Product:**

1mg/ml in PBS with 0.1% Sodium Azide, 50% Glycerol.

**Molecular Weight:**

~ 175 kDa

**Swiss-Prot:**

P00533

**Purification&Purity:**

The antibody was affinity-purified from rabbit antiserum by affinity-chromatography using epitope-specific immunogen and the purity is > 95% (by SDS-PAGE).

**Applications:**

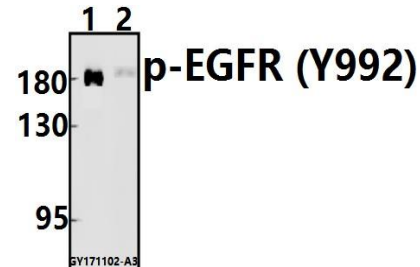
WB: 1:500~1:1000 IHC: 1:50~1:200 IF: 1:50~1:200

**Storage&Stability:**

Store at 4 °C short term. Aliquot and store at -20 °C long term. Avoid freeze-thaw cycles.

**Specificity:**

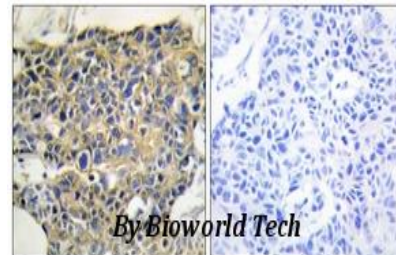
p-EGFR (Y992) polyclonal antibody detects endogenous levels of EGFR protein only when phosphorylated at Tyr992 (removal of the signal peptide).

**DATA:**

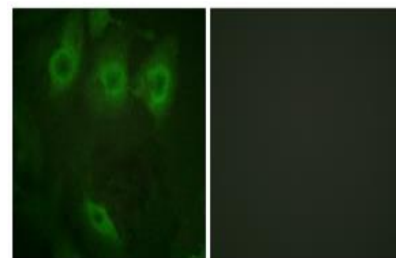
Western blot (WB) analysis of p-EGFR (Y992) pAb at 1:500 dilution

Lane1:HCC827 whole cell lysate(20ug)

Lane2:A549 whole cell lysate(40ug)



Immunohistochemistry analysis of paraffin-embedded human breast carcinoma, using p-EGFR (Y992) pAb. The picture on the right is treated with the synthesized peptide.



Immunofluorescence analysis of HeLa cells, using p-EGFR (Y992) pAb. The picture on the right is treated with the synthesized peptide.

**Note:**

For research use only, not for use in diagnostic procedure.

**Bioworld Technology, Inc.**

Add: 1660 South Highway 100, Suite 500 St. Louis Park, MN 55416, USA.

Email: [info@bioworld.com](mailto:info@bioworld.com)

Tel: 6123263284

Fax: 6122933841

**Bioworld technology, co. Ltd.**

Add: No 9, weidi road Qixia District Nanjing, 210046, P. R. China.

Email: [info@biogot.com](mailto:info@biogot.com)

Tel: 0086-025-68037686

Fax: 0086-025-68035151