

Bcl-2 (phospho-T69) polyclonal antibody

Catalog: BS4294

Host: Rabbit

Reactivity: Human, Mouse, Rat

BackGround:

Bcl-2 is one among many key regulators of apoptosis which are essential for proper development, tissue homeostasis and protection against foreign pathogens. Human Bcl-2 is a 26 kDa, membrane-associated, anti-apoptotic oncoprotein that can promote cell survival through protein-protein interactions with other Bcl-2 related family members, such as the death suppressors Bcl-xL, Mcl-1, Bcl-w and A1, or the death agonists Bax, Bak, Bik, Bad and BID. The anti-apoptotic function of Bcl-2 can also be regulated through proteolytic processing and phosphorylation. Bcl-2 may promote cell survival by interfering with the activation of the cytochrome c/Apaf-1 pathway through stabilization of the mitochondrial membrane.

Product:

1 mg/ml in Phosphate buffered saline (PBS) with 15 mM sodium azide, approx. pH 7.2.

Molecular Weight:

~ 26 kDa

Swiss-Prot:

P10415

Purification&Purity:

The antibody was affinity-purified from rabbit antiserum by affinity-chromatography using epitope-specific immunogen and the purity is > 95% (by SDS-PAGE).

Applications:

IHC: 1:50~1:200

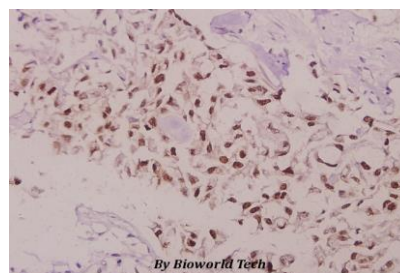
Storage&Stability:

Store at 4 °C short term. Aliquot and store at -20 °C long term. Avoid freeze-thaw cycles.

Specificity:

P-Bcl-2 (T69) polyclonal antibody detects endogenous levels of Bcl-2 protein only when phosphorylated at Thr69 . .

DATA:



Immunohistochemistry (IHC) analyzes of p-Bcl-2 (T69) pAb in paraffin-embedded human colorectal carcinoma tissue at 1:50.

Note:

For research use only, not for use in diagnostic procedure.

Bioworld Technology, Inc.

Add: 1660 South Highway 100, Suite 500 St. Louis Park, MN 55416, USA.

Email: info@bioworld.com

Tel: 6123263284

Fax: 6122933841

Bioworld technology, co. Ltd.

Add: No 9, weidi road Qixia District Nanjing, 210046, P. R. China.

Email: info@biogot.com

Tel: 0086-025-68037686

Fax: 0086-025-68035151