

Rsk-1 (phospho-T359/S363) polyclonal antibody

Catalog: BS4276

Host: Rabbit

Reactivity: Human, Mouse, Rat

BackGround:

The family of ribosomal S6 kinases (Rsk), designated Rsk-1 (or MAPKAP kinase-1), Rsk-2 and Rsk-3, are intracellular serine/threonine kinases that are important signaling intermediates in response to a broad range of ligand activated receptor tyrosine kinases. A unique feature common to the members of the Rsk family is that each possesses two non-identical complete kinase catalytic domains. An additional Rsk protein, Rsk-4, shows a high level of homology to the three previously isolated members of the human Rsk family. Rsk-4 is most abundantly expressed in brain and kidney and plays a role in normal neuronal development.

Product:

Rabbit IgG, 1mg/ml in PBS with 0.02% sodium azide, 50% glycerol, pH7.2

Molecular Weight:

~ 90 kDa

Swiss-Prot:

Q15418

Purification&Purity:

The antibody was affinity-purified from rabbit antiserum by affinity-chromatography using epitope-specific immunogen and the purity is > 95% (by SDS-PAGE).

Applications:

WB: 1:500~1:1000

IHC: 1:50~1:200

IF: 1:50~1:200

IP: 1:50~1:200

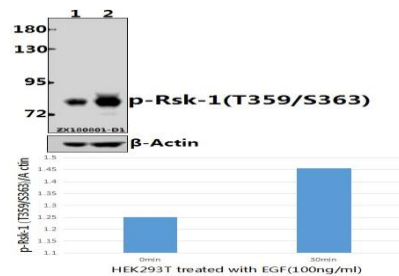
Storage&Stability:

Store at 4 °C short term. Aliquot and store at -20 °C long term. Avoid freeze-thaw cycles.

Specificity:

Rsk-1 (phospho-T359/S363) polyclonal antibody detects endogenous levels of Rsk-1 protein only when phosphorylated at Thr359/Ser363.

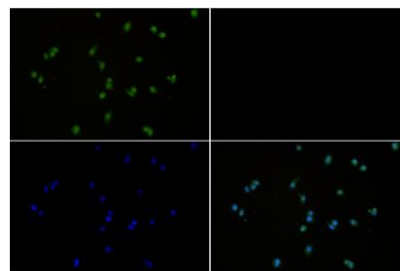
DATA:



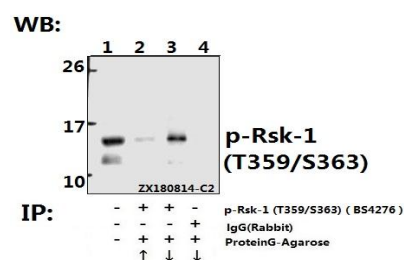
Western blot (WB) analysis of p-Rsk-1 (T359/S363) pAb at 1:2000 dilution

Lane1:HEK293T whole cell lysate(40ug)

Lane2:HEK293T treated with EGF(100ng/ml,30 minutes) whole cell lysate(40ug)



Immunofluorescence analysis of CT26 cells using Rsk-1 (phospho-T359/S363) antibody at dilution of 1:50.



Immunoprecipitation of HepG2 cell lysate using p-Rsk-1 (T359/S363) pAb (Sephacose Bead Conjugate) #BD0048(lane 2 and lane 3) and Nonspecific IgG Control (Sephacose Bead Conjugate) #BD0048 (lane 4) .Lane 1 is 30% input. The western blot was probed using p-Rsk-1 (T359/S363) #BS4276. “↑”(supernatant) ; “↓”(deposition)

Bioworld Technology, Inc.

Add: 1660 South Highway 100, Suite 500 St. Louis Park, MN 55416,USA.

Email: info@bioworld.com

Tel: 6123263284

Fax: 6122933841

Bioworld technology, co. Ltd.

Add: No 9, weidi road Qixia District Nanjing, 210046, P. R. China.

Email: info@biogot.com

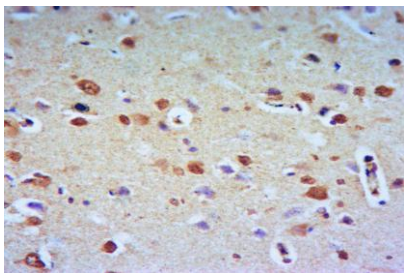
Tel: 0086-025-68037686

Fax: 0086-025-68035151



PRODUCT DATA SHEET

Bioworld Technology, Inc.



Immunohistochemistry of paraffin-embedded Rat Brain using Rsk-1 (phospho-T359/S363) antibody at dilution of 1:50.

Note:

For research use only, not for use in diagnostic procedure.

Bioworld Technology, Inc.

Add: 1660 South Highway 100, Suite 500 St. Louis Park, MN 55416, USA.

Email: info@bioworld.com

Tel: 6123263284

Fax: 6122933841

Bioworld technology, co. Ltd.

Add: No 9, weidi road Qixia District Nanjing, 210046, P. R. China.

Email: info@biogot.com

Tel: 0086-025-68037686

Fax: 0086-025-68035151