

## NOS1 (phospho-S852) polyclonal antibody

Catalog: BS4274

Host: Rabbit

Reactivity: Human, Mouse, Rat

### BackGround:

NOS activity requires homodimerization as well as three cosubstrates (L-arginine, NADPH and O<sub>2</sub>) and five co-factors or prosthetic groups (FAD, FMN, calmodulin, tetrahydrobiopterin and heme). Several distinct NOS isoforms have been described and been shown to represent the products of three distinct genes. These include two constitutive Ca<sup>2+</sup>/CaM-dependent forms of NOS, including NOS1 (also designated ncNOS) whose activity was first identified in neurons, and NOS3 (also designated eNOS), first identified in endothelial cells.

### Product:

1 mg/ml in Phosphate buffered saline (PBS) with 0.05% sodium azide, approx. pH 7.2.

### Molecular Weight:

~ 43,125,149,160 kDa

### Swiss-Prot:

P29475

### Purification&Purity:

The antibody was affinity-purified from rabbit antiserum by affinity-chromatography using epitope-specific immunogen and the purity is > 95% (by SDS-PAGE).

### Applications:

IHC: 1:50~1:200

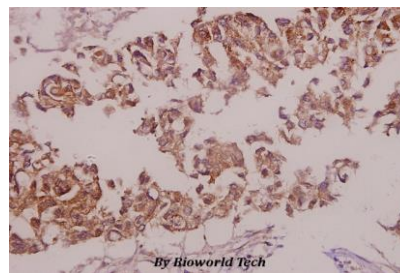
### Storage&Stability:

Store at 4 °C short term. Aliquot and store at -20 °C long term. Avoid freeze-thaw cycles.

### Specificity:

p-NOS1 (S852) polyclonal antibody detects endogenous levels of human NOS1 protein only when phosphorylated at Ser852. This antibody also detects mouse and rat NOS1 protein when phosphorylated at the corresponding sites (Ser847).

### DATA:



Immunohistochemistry (IHC) analyzes of p-NOS1 (S852) pAb in paraffin-embedded human colorectal carcinoma tissue at 1:50.

### Note:

For research use only, not for use in diagnostic procedure.

### Bioworld Technology, Inc.

Add: 1660 South Highway 100, Suite 500 St. Louis Park, MN 55416, USA.

Email: [info@bioworld.com](mailto:info@bioworld.com)

Tel: 6123263284

Fax: 6122933841

### Bioworld technology, co. Ltd.

Add: No 9, weidi road Qixia District Nanjing, 210046, P. R. China.

Email: [info@biogot.com](mailto:info@biogot.com)

Tel: 0086-025-68037686

Fax: 0086-025-68035151