

Insulin Receptor (phospho-Y1355) polyclonal antibody

Catalog: BS4270

Host: Rabbit

Reactivity: Human, Mouse, Rat

BackGround:

The insulin receptor (IR) is a heterodimeric protein complex that has an intracellular β subunit and an extracellular α subunit, which is disulfide-linked to a transmembrane segment. The insulin ligand binds to the IR and initiates molecular signaling pathways that promote glucose uptake in cells and glycogen synthesis. Insulin binding to IR induces phosphorylation of intracellular tyrosine kinase domains and recruitment of multiple SH2 and SH3 domain-containing intracellular proteins that serve as signaling intermediates for pleiotropic effects of insulin.

Product:

1 mg/ml in Phosphate buffered saline (PBS) with 0.05% sodium azide, approx. pH 7.2.

Molecular Weight:

~ 95 kDa

Swiss-Prot:

P06213

Purification&Purity:

The antibody was affinity-purified from rabbit antiserum by affinity-chromatography using epitope-specific immunogen and the purity is > 95% (by SDS-PAGE).

Applications:

WB: 1:500~1:1000

IHC: 1:50~1:200

Storage&Stability:

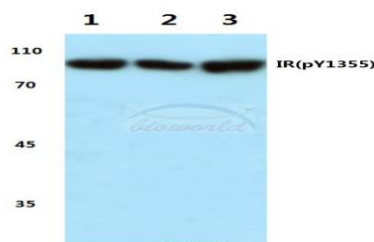
Store at 4 °C short term. Aliquot and store at -20 °C long term. Avoid freeze-thaw cycles.

Specificity:

p-Insulin Receptor (Y1355) polyclonal antibody detects

endogenous levels of Insulin Receptor protein only when phosphorylated at Tyr1355.

DATA:

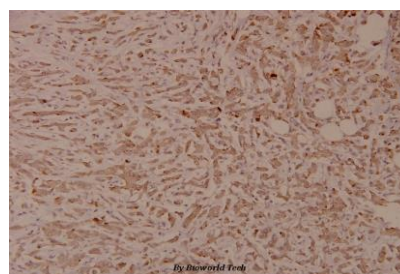


Western blot (WB) analysis of p-Insulin Receptor (Y1355) polyclonal antibody at 1:500 dilution

Lane1:Hela cell lysate treated with insulin

Lane2:Mouse brain tissue lysate

Lane3:Rat brain tissue lysate



Immunohistochemistry (IHC) analyzes of p-Insulin Receptor (Y1355) pAb in paraffin-embedded human breast carcinoma tissue at 1:100.

Note:

For research use only, not for use in diagnostic procedure.

Bioworld Technology, Inc.

Add: 1660 South Highway 100, Suite 500 St. Louis Park, MN 55416, USA.

Email: info@bioworld.com

Tel: 6123263284

Fax: 6122933841

Bioworld technology, co. Ltd.

Add: No 9, weidi road Qixia District Nanjing, 210046, P. R. China.

Email: info@biogot.com

Tel: 0086-025-68037686

Fax: 0086-025-68035151