

GAPDH Recombinant Rabbit mAb

Catalog: BS42645

Host: Rabbit

 Reactivity: Human, Mouse, Rat, Chicken,
Zebrafish, Monkey, Xenopus
tropicalis

BackGround:

This gene encodes a member of the glyceraldehyde-3-phosphate dehydrogenase protein family. The encoded protein has been identified as a moonlighting protein based on its ability to perform mechanistically distinct functions. The encoded protein was originally identified as a key glycolytic enzyme that converts D-glyceraldehyde 3-phosphate (G3P) into 3-phospho-D-glyceroyl phosphate. Subsequent studies have assigned a variety of additional functions to the protein including nitrosylation of nuclear proteins, the regulation of mRNA stability, and acting as a transferrin receptor on the cell surface of macrophage. Alternative splicing results in multiple transcript variants. Many pseudogenes similar to this locus are found throughout the mouse genome. [provided by RefSeq, Jan 2014]

Product:

Store at -20 °C. Supplied in 50mM Tris-Glycine(pH 7.4), 0.15M NaCl, 40%Glycerol, 0.01% sodium azide and 0.05% BSA. Stable for 12 months from date of receipt.

Molecular Weight:

36 kDa

Swiss-Prot:

P16858

Purification&Purity:

Affinity Purification

Applications:

WB: 1:2000-1:20000 IHC: 1:200-1:2000
ICC/IF: 1:200-1:500 FC: 1:50-1:200 IP:
1:50

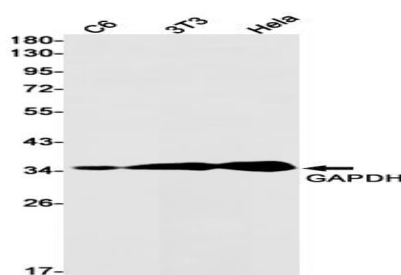
Storage&Stability:

Store at 4 °C short term. Aliquot and store at -20 °C long term. Avoid freeze-thaw cycles.

Isotype:

IgG

DATA:



Western blot detection of GAPDH in C6, 3T3, HeLa cell lysates using GAPDH antibody (1:1000 diluted).

Note:

For research use only, not for use in diagnostic procedure.

Bioworld Technology, Inc.

Add: 1660 South Highway 100, Suite 500 St. Louis Park,
MN 55416, USA.

Email: info@bioworld.com

Tel: 6123263284

Fax: 6122933841

Bioworld technology, co. Ltd.

Add: No 9, weidi road Qixia District Nanjing, 210046,
P. R. China.

Email: info@biogot.com

Tel: 0086-025-68037686

Fax: 0086-025-68035151