

## Rpb1 (phospho-S1619) polyclonal antibody

Catalog: BS4246

Host: Rabbit

Reactivity: Human, Mouse, Rat

### BackGround:

RPB1 is a subunit of RNA polymerase II which catalyses transcription of RNA from DNA. RPB1 forms the polymerase active center together with the second largest subunit. Pol II is the central component of the basal RNA polymerase II transcription machinery. It is composed of mobile elements that move relative to each other. RPB1 is part of the core element with the central large cleft, the clamp element that moves to open and close the cleft and the jaws that are thought to grab the incoming DNA template.

### Product:

1 mg/ml in Phosphate buffered saline (PBS) with 0.05% sodium azide, approx. pH 7.2.

### Molecular Weight:

~ 280 kDa

### Swiss-Prot:

P24928

### Purification&Purity:

The antibody was affinity-purified from rabbit antiserum by affinity-chromatography using epitope-specific immunogen and the purity is > 95% (by SDS-PAGE).

### Applications:

WB: 1:500~1:1000

IHC: 1:50~1:200

### Storage&Stability:

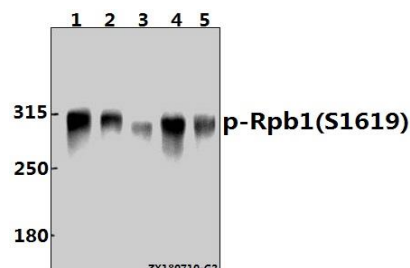
Store at 4 °C short term. Aliquot and store at -20 °C long term. Avoid freeze-thaw cycles.

### Specificity:

p-Rpb1 (S1619) polyclonal antibody detects endogenous levels of Rpb1 protein only when phosphorylated at

Ser1619.

### DATA:



Western blot (WB) analysis of p-Rpb1 (S1619) pAb at 1:2000 dilution

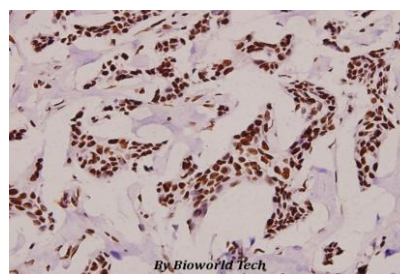
Lane1:A549 whole cell lysate(40ug)

Lane2:Hela whole cell lysate(40ug)

Lane3:A2780 whole cell lysate(40ug)

Lane4:PC12 whole cell lysate(40ug)

Lane5:3T3-L1 whole cell lysate(40ug)



Immunohistochemistry (IHC) analyzes of p-Rpb1 (S1619) pAb in paraffin-embedded human breast carcinoma tissue at 1:100.

### Note:

For research use only, not for use in diagnostic procedure.

### Bioworld Technology, Inc.

Add: 1660 South Highway 100, Suite 500 St. Louis Park, MN 55416, USA.

Email: [info@bioworld.com](mailto:info@bioworld.com)

Tel: 6123263284

Fax: 6122933841

### Bioworld technology, co. Ltd.

Add: No 9, weidi road Qixia District Nanjing, 210046, P. R. China.

Email: [info@biogot.com](mailto:info@biogot.com)

Tel: 0086-025-68037686

Fax: 0086-025-68035151