

PLC γ 2 (phospho-Y753) polyclonal antibody

Catalog: BS4245

Host: Rabbit

Reactivity: Human, Mouse, Rat

BackGround:

Phosphoinositide-specific phospholipase C (PLC) plays a crucial role in the initiation of receptor mediated signal transduction through the generation of the two second messengers, inositol 1,4,5-triphosphate and diacylglycerol from phosphatidylinositol 4,5-bisphosphate. There are many mammalian PLC isozymes, including PLC β 1, PLC β 2, PLC β 3, PLC β 4, PLC γ 1, PLC γ 2, PLC δ 1, PLC δ 2 and PLC ϵ . PLC δ exists as four different isoforms. PLC δ 1, a calcium signal amplifier, is activated by an atypical GTP-binding protein. In addition, PLC δ 1 is an effector for GTP-binding protein transglutaminase II-mediated oxytocin receptor and α 1B-adrenoreceptor signaling. Mouse PLC δ 1 is highly expressed in brain, heart, lung and testis. PLC δ is abnormally accumulated in autopsied brains with Alzheimer's disease (AD), suggesting that it may play a role in the pathology of AD. PLC δ 2 is markedly expressed in type II intestinal metaplasia and in the adenocarcinoma. When PLC δ 2 is expressed in type I intestinal metaplasia, the metaplasia is generally considered benign, yet evolves toward neoplastic transformation. Thus, PLC δ 2 expression may be a possible marker of gastric malignant transformation.

Product:

1 mg/ml in Phosphate buffered saline (PBS) with 0.05% sodium azide, approx. pH 7.2.

Molecular Weight:

~ 148 kDa

Swiss-Prot:

P16885

Purification&Purity:

The antibody was affinity-purified from rabbit antiserum by affinity-chromatography using epitope-specific immunogen and the purity is > 95% (by SDS-PAGE).

Applications:

WB: 1:500~1:1000

IHC: 1:50~1:200

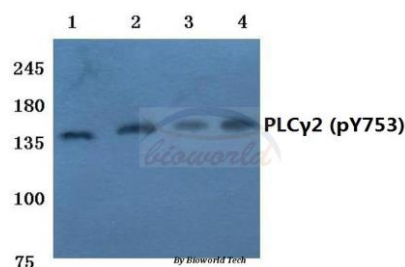
Storage&Stability:

Store at 4 °C short term. Aliquot and store at -20 °C long term. Avoid freeze-thaw cycles.

Specificity:

p-PLC γ 2 (Y753) polyclonal antibody detects endogenous levels of PLC γ 2 protein when phosphorylated at Tyr753.

DATA:



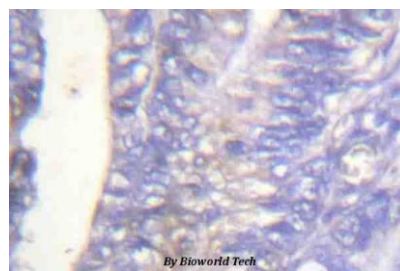
Western blot (WB) analysis of p-PLC γ 2 (Y753) polyclonal antibody at 1:500 dilution

Lane1:Hela cell lysate treated with TNF α

Lane2:Raw264.7 cell lysate treated with TNF α

Lane3:Mouse kidney tissue lysate

Lane4:Rat kidney tissue lysate



Immunohistochemistry (IHC) analyzes of p-PLC γ 2 (Y753) pAb in paraffin-embedded human colon cancer tissue.

Note:

For research use only, not for use in diagnostic procedure.

Bioworld Technology, Inc.

Add: 1660 South Highway 100, Suite 500 St. Louis Park, MN 55416, USA.

Email: info@bioworld.com

Tel: 6123263284

Fax: 6122933841

Bioworld technology, co. Ltd.

Add: No 9, weidi road Qixia District Nanjing, 210046, P. R. China.

Email: info@biogot.com

Tel: 0086-025-68037686

Fax: 0086-025-68035151



PRODUCT DATA SHEET

Bioworld Technology, Inc.

Bioworld Technology, Inc.

Add: 1660 South Highway 100, Suite 500 St. Louis Park,
MN 55416, USA.

Email: info@bioworld.com

Tel: 6123263284

Fax: 6122933841

Bioworld technology, co. Ltd.

Add: No 9, weidi road Qixia District Nanjing, 210046,
P. R. China.

Email: info@biogot.com

Tel: 0086-025-68037686

Fax: 0086-025-68035151