

## SMC 1 (phospho-S957) polyclonal antibody

Catalog: BS4174

Host: Rabbit

Reactivity: Human

### BackGround:

The SMC (structural maintenance of chromosomes) family of proteins form heterodimeric complexes that modulate sister chromatid cohesion and chromosome condensation for mitosis. The two distinct classes of SMC protein complexes are comprised of SMC1 (also designated SB1.8) with SMC3 (also designated HCAP for human chromosome-associated protein, and Bamacan), and SMC2 (also designated hCAP-E) with SMC4 (also designated hCAP-C). The SMC1/SMC3 complex is required for metaphase progression in mitotic cells and functions independently of the SMC2/SMC4 complex during the cell cycle. SMC1 is ubiquitously expressed as a 150 kDa protein in various human tissues, including thymus, testis, and colon. SMC3 is expressed as a 146 kDa nuclear protein in the colon, but can also occur as a secreted proteoglycan (called Bamacan) expressed in testis and brain. Bamacan contains several glycosylation sites and is thought to play a role in basement membrane physiology.

### Product:

1 mg/ml in Phosphate buffered saline (PBS) with 0.05% sodium azide, approx. pH 7.2.

### Molecular Weight:

~ 143 kDa

### Swiss-Prot:

Q14683

### Purification&Purity:

The antibody was affinity-purified from rabbit antiserum by affinity-chromatography using epitope-specific immunogen and the purity is > 95% (by SDS-PAGE).

### Applications:

WB: 1:500~1:1000

IHC: 1:50~1:200

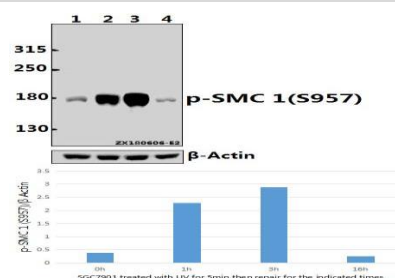
### Storage&Stability:

Store at 4 °C short term. Aliquot and store at -20 °C long term. Avoid freeze-thaw cycles.

### Specificity:

p-SMC1 (S957) polyclonal antibody detects endogenous levels of SMC1 protein only when phosphorylated at Ser957

### DATA:



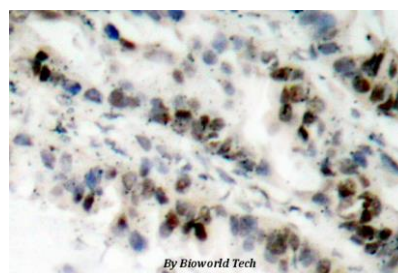
Western blot (WB) analysis of p-SMC 1 (S957) pAb at 1:500 dilution

Lane1:SGC7901 whole cell lysate(40ug)

Lane2:SGC7901 treated with UV for 5 minutes then repair for 1 hours whole cell lysate(40ug)

Lane3:SGC7901 treated with UV for 5 minutes then repair for 3 hours whole cell lysate(40ug)

Lane4:SGC7901 treated with UV for 5 minutes then repair for 16 hours whole cell lysate(40ug)



Immunohistochemistry (IHC) analysis of p-SMC1 (S957) pAb in paraffin-embedded human lung carcinoma tissue.

### Note:

For research use only, not for use in diagnostic procedure.

### Bioworld Technology, Inc.

Add: 1660 South Highway 100, Suite 500 St. Louis Park, MN 55416, USA.

Email: [info@bioworld.com](mailto:info@bioworld.com)

Tel: 6123263284

Fax: 6122933841

### Bioworld technology, co. Ltd.

Add: No 9, weidi road Qixia District Nanjing, 210046, P. R. China.

Email: [info@biogot.com](mailto:info@biogot.com)

Tel: 0086-025-68037686

Fax: 0086-025-68035151



## PRODUCT DATA SHEET

Bioworld Technology, Inc.

---

---

### **Bioworld Technology, Inc.**

Add: 1660 South Highway 100, Suite 500 St. Louis Park,  
MN 55416, USA.

Email: [info@bioworld.com](mailto:info@bioworld.com)

Tel: 6123263284

Fax: 6122933841

### **Bioworld technology, co. Ltd.**

Add: No 9, weidi road Qixia District Nanjing, 210046,  
P. R. China.

Email: [info@biogot.com](mailto:info@biogot.com)

Tel: 0086-025-68037686

Fax: 0086-025-68035151