

## PKC $\zeta$ (phospho-T410) polyclonal antibody

Catalog: BS4156

Host: Rabbit

Reactivity: Human, Mouse, Rat

### BackGround:

Members of the protein kinase C (PKC) family play a key regulatory role in a variety of cellular functions including cell growth and differentiation, gene expression, hormone secretion and membrane function. PKCs were originally identified as serine/threonine protein kinases whose activity was dependent on calcium and phospholipids. Diacylglycerols (DAG) and tumor promoting phorbol esters bind to and activate PKC. PKCs can be subdivided into at least two major classes including conventional (c) PKC isoforms ( $\alpha$ ,  $\beta$ I,  $\beta$ II and  $\gamma$ ) and novel (n) PKC isoforms ( $\delta$ ,  $\epsilon$ ,  $\zeta$ ,  $\eta$  and  $\theta$ ). Patterns of expression for each PKC isoform differs among tissues and PKC family members exhibit clear differences in their cofactor dependencies. For instance, the kinase activities of nPKC  $\delta$  and  $\epsilon$  are independent of  $Ca^{++}$ . On the other hand, nPKC  $\delta$  and  $\epsilon$ , as well as all of the cPKC members, possess phorbol ester-binding activities and kinase activities

### Product:

1 mg/ml in Phosphate buffered saline (PBS) with 0.05% sodium azide, approx. pH 7.2.

### Molecular Weight:

~ 70 to 85 kDa

### Swiss-Prot:

Q05513

### Purification&Purity:

The antibody was affinity-purified from rabbit antiserum by affinity-chromatography using epitope-specific immunogen and the purity is > 95% (by SDS-PAGE).

### Applications:

WB: 1:500~1:1000

IHC: 1:50~1:200

IF: 1:50~1:200

### Storage&Stability:

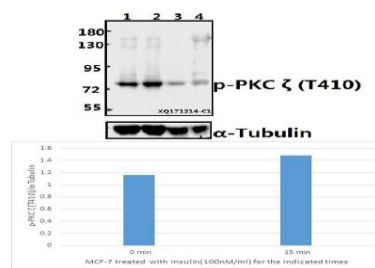
Store at 4 °C short term. Aliquot and store at -20 °C long

term. Avoid freeze-thaw cycles.

### Specificity:

p-PKC  $\zeta$  (T410) polyclonal antibody detects endogenous levels of PKC  $\zeta$  protein only when phosphorylated at Thr410.

### DATA:



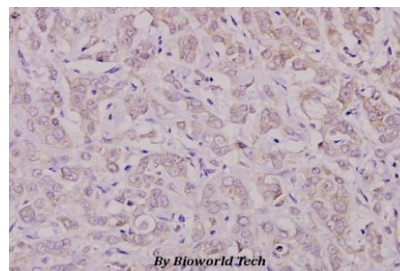
Western blot (WB) analysis of p-PKC  $\zeta$  (T410)pAb at 1:500 dilution

Lane1:MCF-7 whole cell lysate

Lane2:MCF-7 treated with insulin(100nM/ml,15 minutes) whole cell lysate

Lane3:The Kidney tissue lysate of Rat

Lane4:The Lung tissue lysate of Mouse



Immunohistochemistry (IHC) analyzes of p-PKC  $\zeta$  (T410) pAb in paraffin-embedded human breast carcinoma tissue at 1:100.

### Note:

For research use only, not for use in diagnostic procedure.

### Bioworld Technology, Inc.

Add: 1660 South Highway 100, Suite 500 St. Louis Park, MN 55416, USA.

Email: [info@bioworld.com](mailto:info@bioworld.com)

Tel: 6123263284

Fax: 6122933841

### Bioworld technology, co. Ltd.

Add: No 9, weidi road Qixia District Nanjing, 210046, P. R. China.

Email: [info@biogot.com](mailto:info@biogot.com)

Tel: 0086-025-68037686

Fax: 0086-025-68035151