

CD11c monoclonal antibody

Catalog: BS41533

Host: Rabbit

Reactivity: Human

BackGround:

Integrin alpha-X/beta-2 is a receptor for fibrinogen. It recognizes the sequence G-P-R in fibrinogen. It mediates cell-cell interaction during inflammatory responses. It is especially important in monocyte adhesion and chemotaxis.

Product:

Rabbit IgG, 1mg/ml in PBS with 0.02% sodium azide, 50% glycerol, pH7.2.

Molecular Weight:

~ 130 kDa

Swiss-Prot:

P20702

Purification&Purity:

The antibody was affinity-purified from rabbit antiserum by affinity-chromatography using epitope-specific immunogen and the purity is > 95% (by SDS-PAGE).

Applications:

WB 1:500~1:1000 IHC 1:50~1:200 ICC/IF 1:50~1:200
IP 1:50

Storage&Stability:

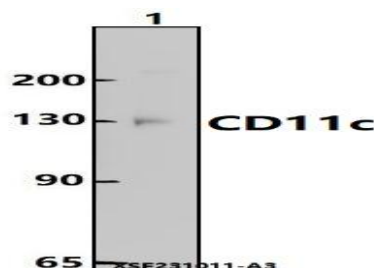
Store at 4 °C short term. Aliquot and store at -20 °C long

term. Avoid freeze-thaw cycles.

Specificity:

CD11c Rabbit monoclonal antibody detects endogenous levels of CD11c protein.

DATA:



Western blot (WB) analysis of CD11c Rabbit monoclonal antibody at 1:500 dilution

Lane1:THP-1 whole cell lysate(30ug)

Immunohistochemical analysis of paraffin-embedded human spleen, using CD11c Antibody.

Note:

For research use only, not for use in diagnostic procedure.

Bioworld Technology, Inc.

Add: 1660 South Highway 100, Suite 500 St. Louis Park, MN 55416, USA.

Email: info@bioworld.com

Tel: 6123263284

Fax: 6122933841

Bioworld technology, co. Ltd.

Add: No 9, weidi road Qixia District Nanjing, 210046, P. R. China.

Email: info@biogol.com

Tel: 0086-025-68037686

Fax: 0086-025-68035151