

KDEL Rabbit monoclonal antibody

Catalog: BS41532

Host: Rabbit

Reactivity: Human,Rat,Mouse

BackGround:

This receptor recognizes K-D-E-L. The sequence Lys-Asp-Glu-Leu (KDEL) or a closely related sequence, is present at the carboxy-terminus of soluble endoplasmic reticulum (ER) resident proteins and some membrane proteins. Determines the specificity of the luminal ER protein retention system. Required for the retention of luminal endoplasmic reticulum proteins. Determines the specificity of the luminal ER protein retention system. Also required for normal vesicular traffic through the Golgi.

Product:

Rabbit IgG, 1mg/ml in PBS with 0.02% sodium azide, 50% glycerol, pH7.2.

Molecular Weight:

~ 90 kDa

Swiss-Prot:

P24390

Purification&Purity:

The antibody was affinity-purified from rabbit antiserum by affinity-chromatography using epitope-specific immunogen and the purity is > 95% (by SDS-PAGE).

Applications:

WB 1:500~1:1000 IHC 1:50~1:200 ICC/IF 1:50~1:200
FC 1:50

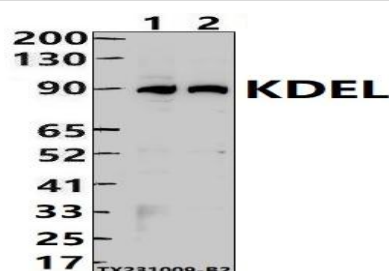
Storage&Stability:

Store at 4 °C short term. Aliquot and store at -20 °C long term. Avoid freeze-thaw cycles.

Specificity:

KDEL Rabbit monoclonal antibody detects endogenous levels of KDEL protein.

DATA:



Western blot (WB) analysis of KDEL Rabbit monoclonal antibody at 1:500 dilution

Lane1:K562 whole cell lysate(30ug)

Lane2:Hela whole cell lysate(30ug)

Immunohistochemical analysis of paraffin-embedded human liver, using KDEL Antibody.

Note:

For research use only, not for use in diagnostic procedure.

Bioworld Technology, Inc.

Add: 1660 South Highway 100, Suite 500 St. Louis Park, MN 55416, USA.

Email: info@bioworld.com

Tel: 6123263284

Fax: 6122933841

Bioworld technology, co. Ltd.

Add: No 9, weidi road Qixia District Nanjing, 210046, P. R. China.

Email: info@biogot.com

Tel: 0086-025-68037686

Fax: 0086-025-68035151