

## Flotillin 2 Rabbit monoclonal antibody

Catalog: BS41531

Host: Rabbit

Reactivity: Human,Rat,Mouse

### BackGround:

May act as a scaffolding protein within caveolar membranes, functionally participating in formation of caveolae or caveolae-like vesicles. May be involved in epidermal cell adhesion and epidermal structure and function.

### Product:

Rabbit IgG, 1mg/ml in PBS with 0.02% sodium azide, 50% glycerol, pH7.2.

### Molecular Weight:

~ 48 kDa

### Swiss-Prot:

Q14254

### Purification&Purity:

The antibody was affinity-purified from rabbit antiserum by affinity-chromatography using epitope-specific immunogen and the purity is > 95% (by SDS-PAGE).

### Applications:

WB 1:500~1:1000 IP 1:30

### Storage&Stability:

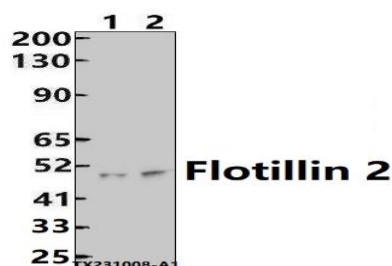
Store at 4 °C short term. Aliquot and store at -20 °C long

term. Avoid freeze-thaw cycles.

### Specificity:

Flotillin 2 Rabbit monoclonal antibody detects endogenous levels of Flotillin 2 protein.

### DATA:



Western blot (WB) analysis of Flotillin 2 Rabbit monoclonal antibody at 1:500 dilution

Lane1:The lung tissue lysate of Mouse(30ug)

Lane2:The lung tissue lysate of Rat(30ug)

### Note:

For research use only, not for use in diagnostic procedure.

### Bioworld Technology, Inc.

Add: 1660 South Highway 100, Suite 500 St. Louis Park, MN 55416,USA.

Email: [info@bioworld.com](mailto:info@bioworld.com)

Tel: 6123263284

Fax: 6122933841

### Bioworld technology, co. Ltd.

Add: No 9, weidi road Qixia District Nanjing, 210046, P. R. China.

Email: [info@biogot.com](mailto:info@biogot.com)

Tel: 0086-025-68037686

Fax: 0086-025-68035151