

Phospho-Chk1 (S280) Rabbit monoclonal antibody

Catalog: BS41507

Host: Rabbit

Reactivity: Human

BackGround:

Serine/threonine-protein kinase which is required for checkpoint-mediated cell cycle arrest and activation of DNA repair in response to the presence of DNA damage or unreplicated DNA. May also negatively regulate cell cycle progression during unperturbed cell cycles.

Product:

Rabbit IgG, 1mg/ml in PBS with 0.02% sodium azide, 50% glycerol, pH7.2.

Molecular Weight:

54kDa

Swiss-Prot:

O14757

Purification&Purity:

Affinity-chromatography

Applications:

WB 1:500~1:2000

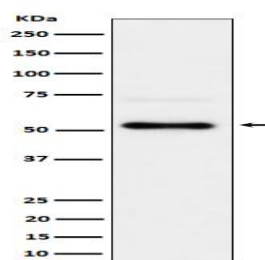
Storage&Stability:

Store at 4 °C short term. Aliquot and store at -20 °C long

term. Avoid freeze-thaw cycles.

Specificity:

Phospho-Chk1 (S280) Antibody detects endogenous levels of total Phospho-Chk1 (S280)

DATA:

Western blot analysis of Phospho-Chk1 (S280) expression in 293T treated with Calyculin A cell lysate.

Note:

For research use only, not for use in diagnostic procedure.

Bioworld Technology, Inc.

Add: 1660 South Highway 100, Suite 500 St. Louis Park, MN 55416, USA.

Email: info@bioworld.com

Tel: 6123263284

Fax: 6122933841

Bioworld technology, co. Ltd.

Add: No 9, weidi road Qixia District Nanjing, 210046, P. R. China.

Email: info@biogol.com

Tel: 0086-025-68037686

Fax: 0086-025-68035151