

Phospho-ErbB2(Y1221 + Y1222) Rabbit monoclonal antibody

Catalog: BS41504

Host: Rabbit

Reactivity: Human

BackGround:

Protein tyrosine kinase that is part of several cell surface receptor complexes, but that apparently needs a coreceptor for ligand binding. Essential component of a neuregulin-receptor complex, although neuregulins do not interact with it alone. GP30 is a potential ligand for this receptor.

Product:

Rabbit IgG, 1mg/ml in PBS with 0.02% sodium azide, 50% glycerol, pH7.2.

Molecular Weight:

185kDa

Swiss-Prot:

P04626

Purification&Purity:

Affinity-chromatography

Applications:

WB 1:500~1:2000

Storage&Stability:

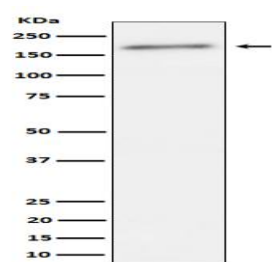
Store at 4 °C short term. Aliquot and store at -20 °C long

term. Avoid freeze-thaw cycles.

Specificity:

Phospho-ErbB2(Y1221 + Y1222) Antibody detects endogenous levels of total Phospho-ErbB2(Y1221 + Y1222)

DATA:



Western blot analysis of Phospho-ErbB2(Y1221 + Y1222) expression in SKBR3 cell lysate.

Note:

For research use only, not for use in diagnostic procedure.

Bioworld Technology, Inc.

Add: 1660 South Highway 100, Suite 500 St. Louis Park, MN 55416, USA.

Email: info@bioworld.com

Tel: 6123263284

Fax: 6122933841

Bioworld technology, co. Ltd.

Add: No 9, weidi road Qixia District Nanjing, 210046, P. R. China.

Email: info@biogol.com

Tel: 0086-025-68037686

Fax: 0086-025-68035151