

## p53 (phospho-S6) polyclonal antibody

Catalog: BS4148

Host: Rabbit

Reactivity: Human, Mouse, Rat

### BackGround:

p53 plays a major role in the cellular response to DNA damage and other genomic aberrations. The activation of p53 can lead to either cell cycle arrest and DNA repair, or apoptosis. p53 is phosphorylated at multiple sites in vivo and by several different protein kinases in vitro. p53 can apparently be phosphorylated by ATM, ATR, and DNAPK at Ser15; the phosphorylation impairs the ability of MDM2 to bind p53, promoting both the accumulation and functional activation of p53 in response to DNA damage. p53 is phosphorylated at Ser6 and Ser9 by ck1 $\delta$  and ck1 $\epsilon$  both in vitro and in vivo. Phosphorylation of p53 at Ser46 is important in regulating the ability of p53 to induce apoptosis. In vivo phosphorylation of p53 at Ser33 by cdk7/cyclin H and in response to UV irradiation has been observed.

### Product:

Rabbit IgG, 1mg/ml in PBS with 0.02% sodium azide, 50% glycerol, pH7.2

### Molecular Weight:

~ 53 kDa

### Swiss-Prot:

P04637

### Purification&Purity:

The antibody was affinity-purified from rabbit antiserum by affinity-chromatography using epitope-specific immunogen and the purity is > 95% (by SDS-PAGE).

### Applications:

WB: 1:500~1:1000

IHC: 1:50~1:200

IP: 1:50~1:200

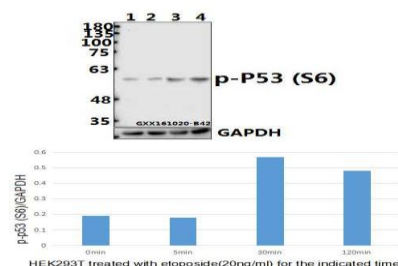
### Storage&Stability:

Store at 4 °C short term. Aliquot and store at -20 °C long term. Avoid freeze-thaw cycles.

### Specificity:

p-p53 (S6) polyclonal antibody detects endogenous levels of p53 protein when phosphorylated at Ser6.

### DATA:



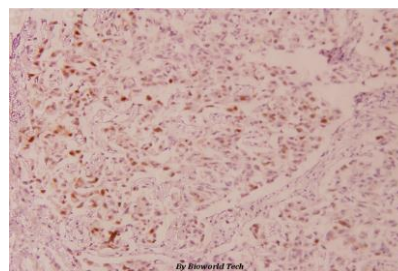
Western blot (WB) analysis of p-p53 (S6) polyclonal antibody at 1:500 dilution

Lane1:HEK293T whole cell lysate(40ug)

Lane2:HEK293T treated with Etoposide(20ng/ml) for 5 minutes whole cell lysate

Lane3:HEK293T treated with Etoposide(20ng/ml) for 30 minutes whole cell lysate

Lane4:HEK293T treated with Etoposide(20ng/ml) for 2 hours whole cell lysate



Immunohistochemistry (IHC) analyzes of p-P53 (S6) pAb in paraffin-embedded human breast carcinoma tissue at 1:100.

### Note:

For research use only, not for use in diagnostic procedure.

### Bioworld Technology, Inc.

Add: 1660 South Highway 100, Suite 500 St. Louis Park, MN 55416, USA.

Email: [info@bioworld.com](mailto:info@bioworld.com)

Tel: 6123263284

Fax: 6122933841

### Bioworld technology, co. Ltd.

Add: No 9, weidi road Qixia District Nanjing, 210046, P. R. China.

Email: [info@biogot.com](mailto:info@biogot.com)

Tel: 0086-025-68037686

Fax: 0086-025-68035151



## PRODUCT DATA SHEET

Bioworld Biotech Co., Ltd

---

---

### **Bioworld Technology, Inc.**

Add: 1660 South Highway 100, Suite 500 St. Louis Park,  
MN 55416, USA.

Email: [info@bioworld.com](mailto:info@bioworld.com)

Tel: 6123263284

Fax: 6122933841

### **Bioworld technology, co. Ltd.**

Add: No 9, weidi road Qixia District Nanjing, 210046,  
P. R. China.

Email: [info@biogot.com](mailto:info@biogot.com)

Tel: 0086-025-68037686

Fax: 0086-025-68035151