

## p53 (phospho-S15) polyclonal antibody

Catalog: BS4144

Host: Rabbit

Reactivity: Human, Mouse, Rat

### BackGround:

p53 plays a major role in the cellular response to DNA damage and other genomic aberrations. The activation of p53 can lead to either cell cycle arrest and DNA repair, or apoptosis. p53 is phosphorylated at multiple sites in vivo and by several different protein kinases in vitro. p53 can apparently be phosphorylated by ATM, ATR, and DNAPK at Ser15; the phosphorylation impairs the ability of MDM2 to bind p53, promoting both the accumulation and functional activation of p53 in response to DNA damage. Chk2 and Chk1 can phosphorylate p53 at Ser20, enhancing its tetramerization, stability and activity. p53 is phosphorylated at Ser392 in vivo and by CAK in vitro. Phosphorylation of p53 at Ser392 is altered in human tumors and has been reported to influence the growth suppressor function, DNA binding and transcriptional activation of p53.

### Product:

Rabbit IgG, 1mg/ml in PBS with 0.02% sodium azide, 50% glycerol, pH7.2

### Molecular Weight:

~ 53 kDa

### Swiss-Prot:

P04637

### Purification&Purity:

The antibody was affinity-purified from rabbit antiserum by affinity-chromatography using epitope-specific immunogen and the purity is > 95% (by SDS-PAGE).

### Applications:

WB: 1:500~1:1000

IHC: 1:50~1:200

IP: 1:50~1:200

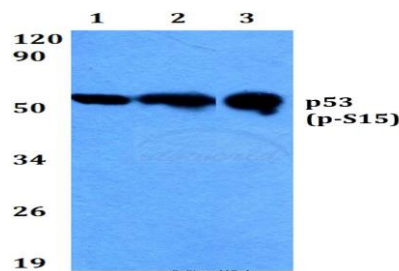
### Storage&Stability:

Store at 4 °C short term. Aliquot and store at -20 °C long term. Avoid freeze-thaw cycles.

### Specificity:

p-p53 (S15) polyclonal antibody detects endogenous levels of p53 protein only when phosphorylated at Ser15

### DATA:

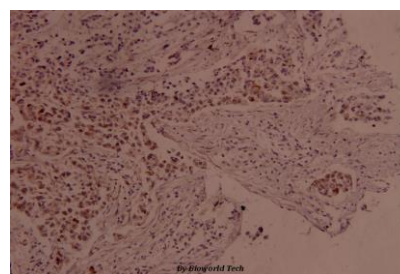


Western blot (WB) analysis of p-p53 (S15) polyclonal antibody at 1:500 dilution

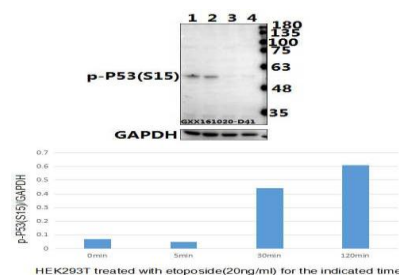
Lane1: HEK293T cell lysate treated with colchicine (0.2ng/ml, 24h)

Lane2: Raw264.7 cell lysate treated with colchicine (0.2ng/ml, 24h)

Lane3: H9C2 cell lysate treated with colchicine (0.2ng/ml, 24h)



Immunohistochemistry (IHC) analyzes of p-p53 (S15) pAb in paraffin-embedded human breast carcinoma tissue at 1:100.



Western blot (WB) analysis of p-p53 (S15) pAb at 1:500 dilution

Lane1: HEK293T treated with Etoposide (20ng/ml) for 2 hours whole cell lysate

Lane2: HEK293T treated with Etoposide (20ng/ml) for 30 minutes whole cell lysate

### Bioworld Technology, Inc.

Add: 1660 South Highway 100, Suite 500 St. Louis Park, MN 55416, USA.

Email: [info@bioworld.com](mailto:info@bioworld.com)

Tel: 6123263284

Fax: 6122933841

### Bioworld technology, co. Ltd.

Add: No 9, weidi road Qixia District Nanjing, 210046, P. R. China.

Email: [info@biogot.com](mailto:info@biogot.com)

Tel: 0086-025-68037686

Fax: 0086-025-68035151



## PRODUCT DATA SHEET

Bioworld Technology, Inc.

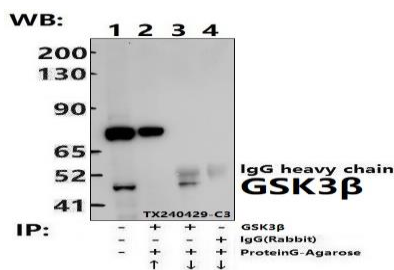
Lane3:HEK293T treated with Etoposide(20ng/ml) for 5 minutes whole cell lysate

Lane4:HEK293T whole cell lysate(40ug)

pho-S15) pAb.

### Note:

For research use only, not for use in diagnostic procedure.



Immunoprecipitation of HepG2 cell lysates using p53 (phospho-S15) pAb (Sepharose Bead Conjugate)#BD0048 (lane 2 and lane 3) and Nonspecific IgG Control (Sepharose Bead Conjugate)#BD0048 (lane 4). Lane 1 is 30% input. The western blot was probed using p53 (phos-

### Bioworld Technology, Inc.

Add: 1660 South Highway 100, Suite 500 St. Louis Park, MN 55416, USA.

Email: [info@bioworld.com](mailto:info@bioworld.com)

Tel: 6123263284

Fax: 6122933841

### Bioworld technology, co. Ltd.

Add: No 9, weidi road Qixia District Nanjing, 210046, P. R. China.

Email: [info@biogot.com](mailto:info@biogot.com)

Tel: 0086-025-68037686

Fax: 0086-025-68035151