

Phospho-Chk2 (T68) Rabbit monoclonal antibody

Catalog: BS41415

Host: Rabbit

Reactivity: Human

BackGround:

These are known to be preferred sites for phosphorylation by ATM/ATR kinases. After DNA damage by ionizing radiation (IR), UV irradiation, or hydroxyurea treatment, Thr68 and other sites in this region become phosphorylated by ATM/ATR. The SQ/TQ cluster domain, therefore, seems to have a regulatory function.

Product:

Rabbit IgG, 1mg/ml in PBS with 0.02% sodium azide, 50% glycerol, pH7.2.

Molecular Weight:

65kDa

Swiss-Prot:

O96017

Purification&Purity:

Affinity-chromatography

Applications:

WB 1:500~1:2000 IP 1:50

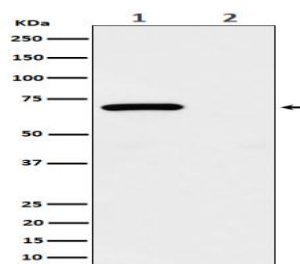
Storage&Stability:

Store at 4 °C short term. Aliquot and store at -20 °C long term. Avoid freeze-thaw cycles.

Specificity:

Phospho-Chk2 (T68) Antibody detects endogenous levels of total Phospho-Chk2 (T68)

DATA:



Western blot analysis of Phospho-Chk2 (T68) expression in (1) 293 treated with UV and Untreated cell lysate; (2) Untreated.

Note:

For research use only, not for use in diagnostic procedure.

Bioworld Technology, Inc.

Add: 1660 South Highway 100, Suite 500 St. Louis Park, MN 55416, USA.

Email: info@bioworld.com

Tel: 6123263284

Fax: 6122933841

Bioworld technology, co. Ltd.

Add: No 9, weidi road Qixia District Nanjing, 210046, P. R. China.

Email: info@biogol.com

Tel: 0086-025-68037686

Fax: 0086-025-68035151