

**NPY5R Rabbit monoclonal antibody**

Catalog: BS41408

Host: Rabbit

Reactivity: Human

**BackGround:**

Receptor for neuropeptide Y and peptide YY. The activity of this receptor is mediated by G proteins that inhibit adenylate cyclase activity. Seems to be associated with food intake. Could be involved in feeding disorders.

**Product:**

Rabbit IgG, 1mg/ml in PBS with 0.02% sodium azide, 50% glycerol, pH7.2.

**Molecular Weight:**

51kDa

**Swiss-Prot:**

Q15761

**Purification&Purity:**

Affinity-chromatography

**Applications:**

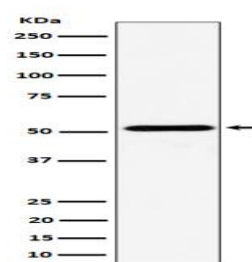
WB 1:500~1:2000 ICC/IF 1:50~1:200 FC 1:50

**Storage&Stability:**

Store at 4 °C short term. Aliquot and store at -20 °C long term. Avoid freeze-thaw cycles.

**Specificity:**

NPY5R Antibody detects endogenous levels of total NPY5R

**DATA:**

Western blot analysis of NPY5R expression in Ramos cell lysate.

**Note:**

For research use only, not for use in diagnostic procedure.

**Bioworld Technology, Inc.**

Add: 1660 South Highway 100, Suite 500 St. Louis Park, MN 55416, USA.

Email: [info@bioworld.com](mailto:info@bioworld.com)

Tel: 6123263284

Fax: 6122933841

**Bioworld technology, co. Ltd.**

Add: No 9, weidi road Qixia District Nanjing, 210046, P. R. China.

Email: [info@biogol.com](mailto:info@biogol.com)

Tel: 0086-025-68037686

Fax: 0086-025-68035151